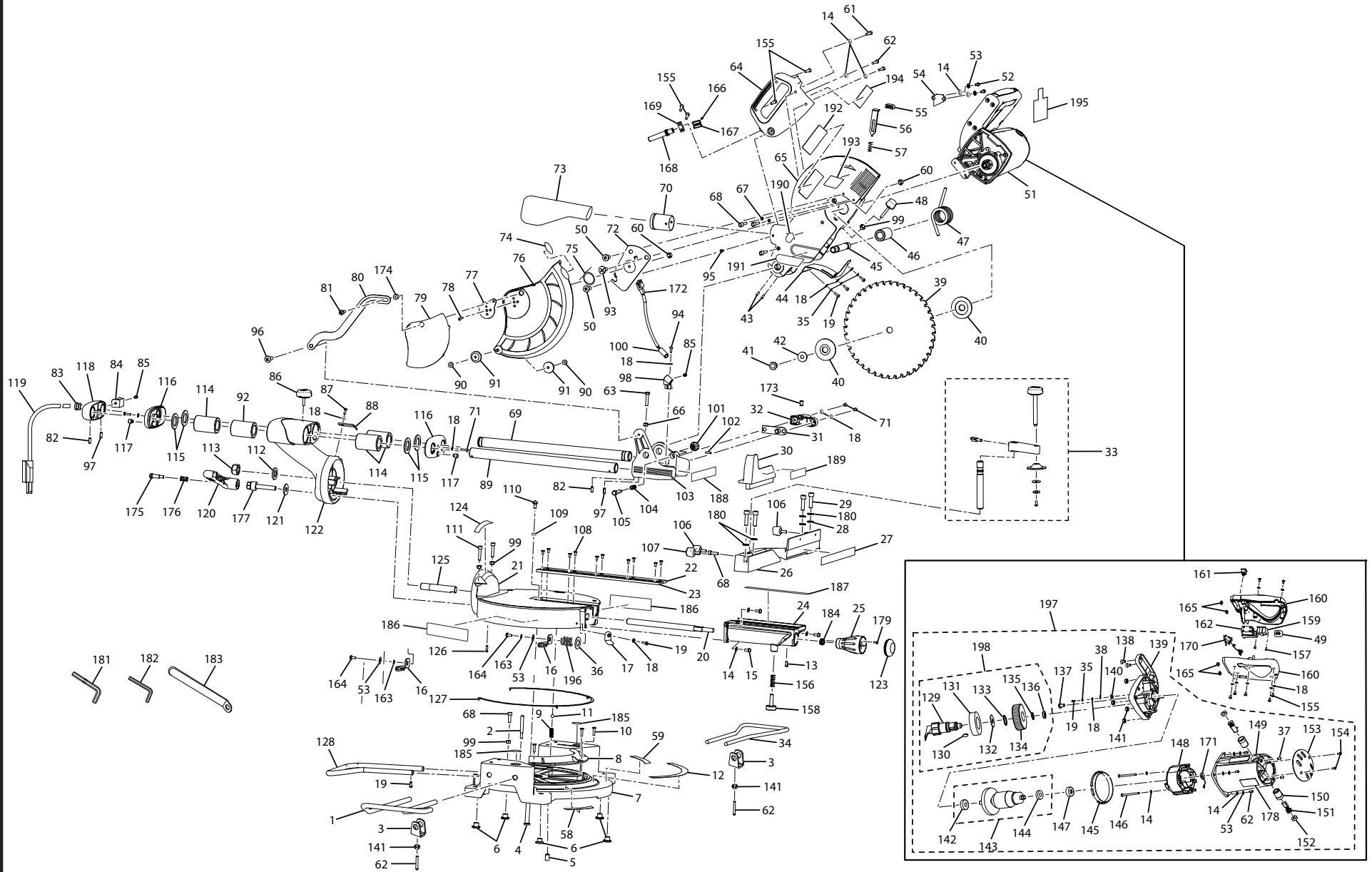


RYOBI
10 in. SLIDING MITER SAW
w/LASER
MODEL NO. TSS100L
REPAIR SHEET

RYOBI 10 in. SLIDING MITER SAW w/LASER - MODEL NUMBER TSS100L



RYOBI 10 in. SLIDING MITER SAW w/LASER – MODEL NUMBER TSS100L

The model number will be found on a plate attached to the motor housing. Always mention the model number in all correspondence regarding your **MITER SAW** or when ordering repair parts.

PARTS LIST

KEY NO.	PART NUMBER	DESCRIPTION	QTY.	KEY NO.	PART NUMBER	DESCRIPTION	QTY.
1	089100113813	Extension Bar, Left	1	34	089100113814	Extension Bar, Right	1
2	089100113002	Screw (45°)	1	35	089100113035	Spring Washer	6
3	089100118001	Clamp	2	36	089100118036	* Washer (M14)	1
4	089100113004	Pivot Shaft	1	37	089100118014	* Screw (M4 x 8 mm Pan Hd.).....	2
5	089100118002	* Screw (M10 x 10 mm Hex Soc. Hd.).....	1	38	089100113187	Ground Terminal	1
6	089100113006	Rubber Feet.....	5	39	089100113804	Saw Blade	1
7	089100113700	Base	1	40	089100113040	Blade Flange (45°)	2
8	089100113008	Base Plate	1	41	089100113041	* Bolt (M8 x 20 mm Hex Hd. LH)	1
9	089100113009	Tension Spring.....	1	42	089100113042	Blade Washer	1
10	089100118003	* Screw (M5 x 10 mm Flat Hd.).....	3	43	089100113043	* Screw (M5 x 12 mm).....	2
11	089100113011	Ball.....	1	44	089100113044	Protection Plate	1
12	089100118908	Miter Angle Label	1	45	089100113045	Shaft A.....	1
13	089100118004	* Screw (M5 x 8 mm Hex Soc. Hd.).....	1	46	089100113046	Sleeve B	1
14	089100113014	Washer (M5).....	17	47	089100113047	Torsion Spring A	1
15	089100118005	* Screw (M5 x 16 mm Pan Hd.).....	4	48	089100113048	Adjustable Knob, for Blade Guard	3
16	089100113016	Locking Plate.....	1	49	089100118031	Replacement Lens (Indicator Cap).....	1
17	089100113017	Miter Pointer	1	50	089100118030	* Screw (M5 x 10 mm).....	2
18	089100113018	Washer (M4).....	20	51	089100118700	Motor Assembly	1
19	089100118006	* Screw (M4 x 10 mm Pan Hd.).....	11	52	089100113052	* Screw (M5 x 10 mm Pan Hd.).....	4
20	089100113020	Miter Handle Shaft.....	1	53	089100113053	Spring Washer	9
21	089100113021	Table	1	54	089100113054	Mounting Plate	1
22	089100113022	Right Throat Plate.....	1	55	089100113055	Blade Release Knob.....	1
23	089100113023	Left Throat Plate	1	56	089100113056	Blade Release Plate	1
24	089100113024	Extension Nose	1	57	089100113057	Compression Spring, for Blade Release Plate .	1
25	089100113025	Miter Lock Knob	1	58	089100118910	Warning Label (L).....	1
26	089100113026	Fence.....	1	59	089100118913	Warning Label (R)	1
27	089100118904	Fence Scale Label	1	60	089100113060	* Lock Nut (M5), for Safety Knob.....	2
28	089100113028	Washer.....	4	61	089100113061	* Screw (M5 x 25 mm Pan Hd.).....	2
29	089100113029	* Screw (M8 x 25 mm Hex Soc. Hd.).....	4	62	089100113062	* Screw (M5 x 30 mm Pan Hd.).....	8
30	089100113030	Sliding Fence.....	1	63	089100118029	* Bolt (M8 x 30 mm Hex. Hd.)	1
31	089100113031	Inner Plate (Cable Bracket A)	1	64	089100113064	Carry Handle Assembly.....	1
32	089100113032	Cable Bracket A	1	65	089100113065	Upper Blade Guard	1
33	089100113800	Work Clamp Assembly (A).....	1	66	089100118028	* Hex Nut (M8)	1

* Standard Hardware Item – May Be Purchased Locally

RYOBI 10 in. SLIDING MITER SAW w/LASER – MODEL NUMBER TSS100L

The model number will be found on a plate attached to the motor housing. Always mention the model number in all correspondence regarding your **MITER SAW** or when ordering repair parts.

PARTS LIST

KEY NO.	PART NUMBER	DESCRIPTION	QTY.	KEY NO.	PART NUMBER	DESCRIPTION	QTY.
67	089100113067	Spring Washer	3	100	089100113100	Laser Light.....	1
68	089100113068	* Screw (M6 x 20 mm Hex Soc. Hd.).....	5	101	089100113101	Lock Down Pin Button	1
69	089100118027	Tube.....	1	102	089100113102	Elastic Pin	2
70	089100113070	Dust Adaptor	1	103	089100113103	Blade Guard Bracket	1
71	089100118026	* Screw (M4 x 12 mm Pan Hd.).....	4	104	089100113104	Spring	1
72	089100113072	Pivot Plate	1	105	089100113105	Lock Down Pin (45°).....	1
73	089100113805	Dust Bag.....	1	106	089100113106	Lock Knob B (Work Clamp Assembly)	2
74	089100113905	No Hands Label.....	1	107	089100113107	Lock Knob A (Extension Fence)	1
75	089100113075	Torsion Spring B	1	108	089100113108	Screw (M4 x 10 mm Flat Hd.).....	12
76	089100113076	Lower Blade Guard	1	109	089100113109	Washer.....	1
77	089100113077	Fix Plate (Lower Blade Guard).....	1	110	089100113110	* Screw (M6).....	1
78	089100118007	* Carriage Bolt (M5 x 14 mm)	1	111	089100118009	* Screw (M6 x 35 mm Hex Soc. Hd.).....	2
79	089100113079	Blade Guard Plate	1	112	089100113112	Washer	1
80	089100113080	Linkage Arm	1	113	089100113113	* Lock Nut (M16).....	1
81	089100118008	Screw A (M6), for Link Plate	1	114	089100113114	Sleeve Bearing (LM25UU)	3
82	089100113082	Elastic Pin (M5 x 10 mm).....	2	115	089100113115	Washer.....	4
83	089100113083	Cord Protection Tube A Grommet.....	1	116	089100113116	Bearing Cover.....	2
84	089100113084	Cable Bracket B	1	117	089100113117	Absorbing Vibration Pin.....	2
85	089100113085	* Screw (M4 x 8 mm Hex Soc. Hd.).....	2	118	089100113118	Connection Backlash	1
86	089100113086	Slide Lock Knob, for Slide Bar	1	119	089100118040	Power Cord	1
87	089100113087	* Screw (M4 x 8 mm Pan Hd.).....	1	120	089100113189	Bevel Lock Lever	1
88	089100113088	Bevel Pointer	1	121	089100113121	Washer	1
89	089100113089	Sliding Bar	2	122	089100113122	Arm Support Bracket.....	1
90	089100113090	Lock Ring (65Mn)	2	123	089100118023	Miter Handle Cap	1
91	089100113091	Roller	2	124	089100118905	Bevel Scale Label.....	1
92	089100118025	Sleeve Bearing	1	125	089100113125	Connection Shaft.....	1
93	089100113093	Screw (M5 Flat Hd.).....	1	126	089100113126	* Screw (M6 x 20 mm Hex Soc. Hd.).....	1
94	089100118032	Screw (M4x12 mm Hexagon Socket).....	1	127	089100113127	Spacer	3
95	089100113095	* Screw (M4 x 50 mm).....	1	128	089100113128	Support Wing	1
96	089100118015	Screw B (M6), for Link Plate.....	1	129	089100113129	Output Shaft (45°).....	1
97	089100113097	* Screw (M6 x 8 mm Flat Hd.).....	2	130	089100113130	Key (M5 x 10 mm)	1
98	089100113098	Laser Bracket	1	131	089100113131	Ball Bearing (6304-2RZ)	1
99	089100113099	* Nut (M6).....	5	132	089100113132	Absorbing Vibration Washer.....	1

* Standard Hardware Item – May Be Purchased Locally

RYOBI 10 in. SLIDING MITER SAW w/LASER – MODEL NUMBER TSS100L

The model number will be found on a plate attached to the motor housing. Always mention the model number in all correspondence regarding your **MITER SAW** or when ordering repair parts.

PARTS LIST

KEY NO.	PART NUMBER	DESCRIPTION	QTY.	KEY NO.	PART NUMBER	DESCRIPTION	QTY.
133	089100113133	Retaining Ring	1	165	089100113165	* Square Nut (M5)	4
134	089100113134	Gear	1	166	089100118012	* Screw (M2.9 x 16 mm)	1
135	089100113135	Retaining Ring	1	167	089100113167	Terminal Block	1
136	089100113136	Output Shaft Bushing	1	168	089100113168	Bend Relief	1
137	089100113137	* Screw (M8)	1	169	089100113169	Power Cord Clamp	1
138	089100113138	* Screw (M5 x 12 mm Flat Hd.)	4	170	089100113170	Male Connection w/Wire, for Laser Light	1
139	089100113139	Front Motor Cover	1	171	089100113171	Magnetic Ring w/Winding	2
140	089100113140	Toothed Washer	1	172	089100113172	Female Connection Peg w/Wire, for Laser Light	1
141	089100113141	* Hex Nut (M5)	6	173	089100113173	Cord Protection Tube B Grommet	1
142	089100113142	Ball Bearing (6201-2RZ)	1	174	089100118035	Spacer	1
143	089100113734	Armature Assembly (Inc. Key Nos. 142 and 144)	1	175	089100113175	Screw, for Bevel Lock Knob	1
144	089100113144	Ball Bearing (6001-2RZ)	1	176	089100113176	Spring, for Bevel Lock Knob	1
145	089100113145	Baffle Plate	1	177	089100118013	Bevel Lock Bolt (M10)	1
146	089100113146	* Screw (M5 x 70 mm)	2	178	089100118903	Data Label	1
147	089100113147	Bearing Bushing	1	179	089100118017	* Screw (M4 x 25 mm Pan Hd.)	1
148	089100113148	Field Assembly	1	180	089100113180	Spring Washer (M8)	4
149	089100113149	Motor Housing	1	181	089100113806	* Hex Key (5 mm)	1
150	089100113150	Brush Holder	2	182	089100113807	* Hex Key (6 mm)	1
151	089100113151	Brush Assembly	2	183	089100113808	Wrench	1
152	089100113152	Brush Cap	2	184	089100118016	Adjustment Washer	1
153	089100113153	Motor End Cover	1	185	089100118900	No Hands Label	2
154	089100118010	* Screw (M4.8 x 6.5 mm)	3	186	089100118907	Operation Label	2
155	089100118011	* Screw (M4.2 x 13 mm)	11	187	089100118909	Miter Lock Label	1
156	089100118022	Adjustment Spring	1	188	089100118911	Laser Warning Label	1
157	089100113157	* Screw (M3.2 x 8 mm)	2	189	089100118906	Sliding Fence Instruction Label	1
158	089100118021	Adjustable Support Foot	1	190	089100118902	Loosen Bolt Indicator Label	1
159	089100113159	Transformer	1	191	089100113904	Exactline Label	1
160	089100113736	Handle Assembly	1	192	089100113900	Logo Label (Large)	1
161	089100113161	Laser Switch	1	193	089100118901	Upper Guard Warning Label	1
162	089100118039	Switch	1	194	089100113901	Logo Label (Small)	1
163	089100118020	* Lock Washer (M5)	1	195	089100108072	Hang Tag	1
164	089100118019	* Screw (M5 x 10 mm)	1	196	089100118038	Spring	1

* Standard Hardware Item – May Be Purchased Locally

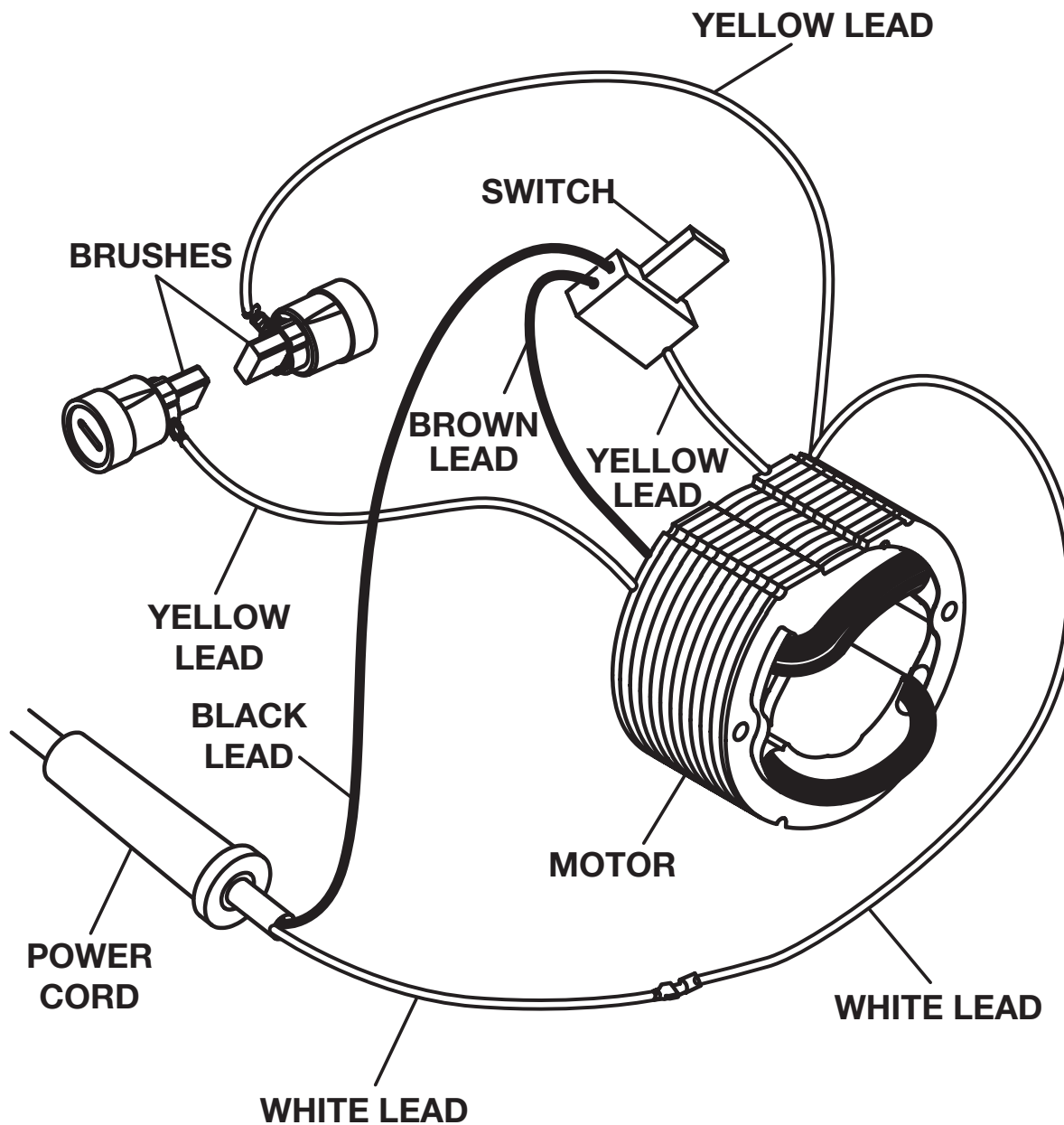
RYOBI 10 in. SLIDING MITER SAW w/LASER – MODEL NUMBER TSS100L

The model number will be found on a plate attached to the motor housing. Always mention the model number in all correspondence regarding your **MITER SAW** or when ordering repair parts.

PARTS LIST

KEY NO.	PART NUMBER	DESCRIPTION	QTY.	KEY NO.	PART NUMBER	DESCRIPTION	QTY.
197	089100118700	Motor Assembly (Inc. Key Nos. 14, 18, 19, 35, 37, 38, 53, 62, 137, 138, 139, 140, 141, 143, 145, 146, 147, 148, 149, 150, 151, 152, 153, 154 and 198).....	1	203	089100113750	Slide Bar Guard Support Bracket Assembly (Inc. Key Nos. 6, 18-19, 31-32, 63, 66, 69, 71, 82-89, 92, 94, 97-105, 112-122, 172-173, 175-177 and 188).....	1
198	089100113733	Output Spindle Assembly (Inc. Key Nos. 129-136).....	1	204	089100113007	Base Assembly (Not Shown) (Inc. Key Nos. 2, 4-8, 10-12, 58-59, 68, 99, 127 and 185).....	1
Not Shown Items:					987000212	Operator's Manual	
199	089100113710	Table Assembly (Inc. Key Nos. 12-25, 53, 99, 108, 111, 123-126, 156, 158, 163-164, 179, 184 and 186-187).....	1		7-07-08 (Rev:02)		
200	089100113717	Fence Assembly (Inc. Key Nos. 26-30, 68, 106-107, 180 and 189).....	1				
201	089100113720	Lower Blade Guard Assembly (Inc. Key Nos. 60, 72, 74-81, 90-91, 93, 96 and 174).....	1				
202	089100113740	Upper Guard Assembly					

* Standard Hardware Item – May Be Purchased Locally



WIRING DIAGRAM