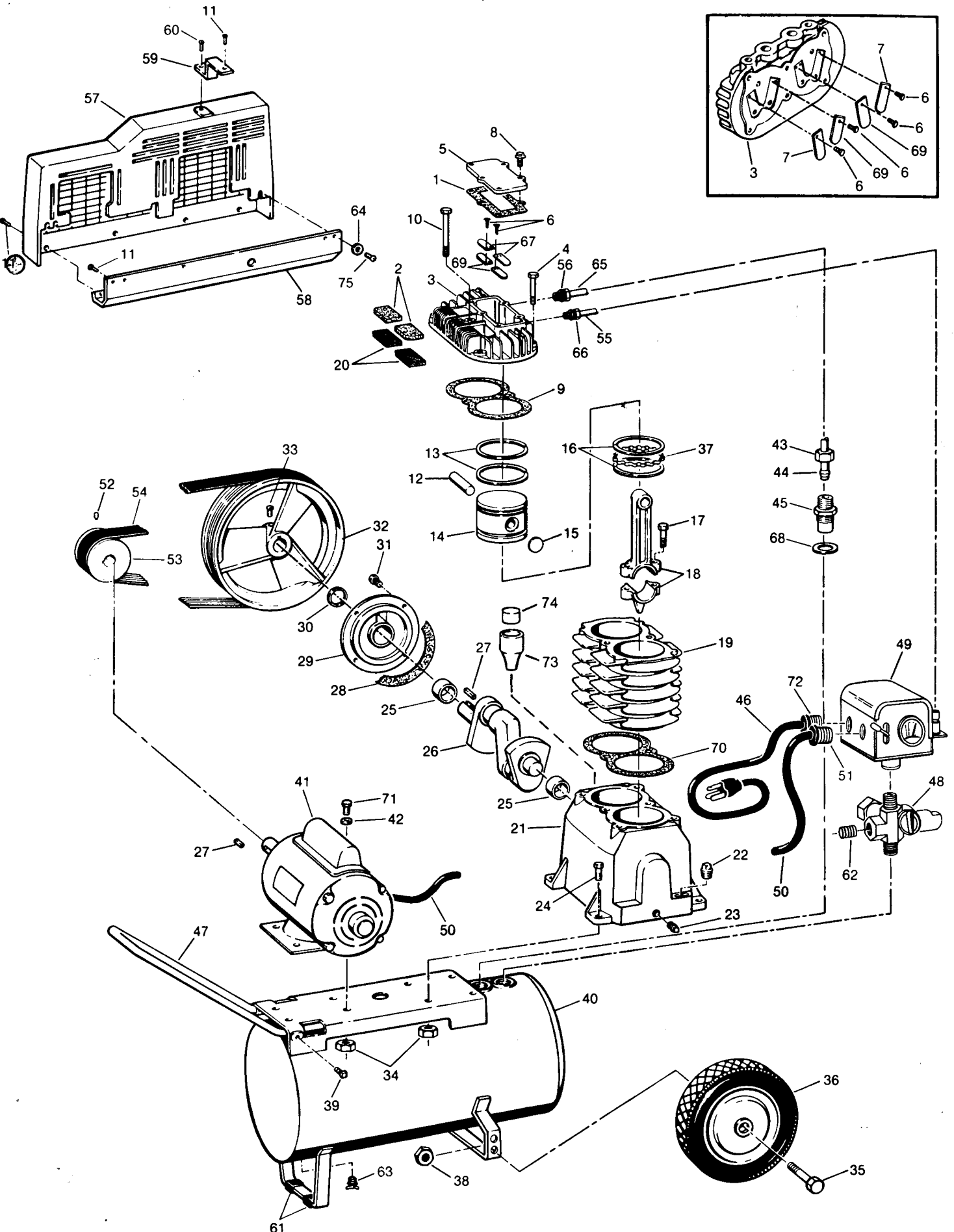


MODELS FL-3504-00, FL-3504-01, FL-3504-02, FX-3504-00, FL-3505-00,  
FL-3507-00, FX-3507-00



# PARTS LIST

KEY NO.	PART NO.	DESCRIPTION	KEY NO.	PART NO.	DESCRIPTION
1	XA007100AV	Head Plate Gasket	48	V-205301AV	Shut Off & Safety Valve (Used on FL350400, FL350401, FL350402, FX350400, FL350500)
2	VT013001AV	Filter (2 Used)		V-205306AV	Shut Off & Safety Valve (Used on FL350700, FX350700)
3	VT015001AG	Cylinder Head	49	CW207536AV	Pressure Switch (Used on FL350400, FL350401, FL350402, FL350500)
4	ST021800AV	Hex Hd. Cap Screw 5/16" -18 (5 Used)		CW207633AV	Pressure Switch (Used on FX350400)
5	VT012900AV	Head Top Plate		CW207537AV	Pressure Switch (Used on FL350700, FX350700)
6	ST073231AV	Screw 5-40 Hex Hd. (12 Used)	50	EC008004AV	Pressure Switch Cord (Used on FL350400, FL350500)
7	VS001800AV	Flapper Valve (2 Used)		EC008001AV	Pressure Switch Cord (Used on FX350400)
8	ST074402AV	Screw 1/4"-20 x 5/8" (5 Used)		EC008005AV	Pressure Switch Cord (Used on FL350700, FX350700)
9	XA003300AV	Cylinder Gasket	51	ST043200AV	Strain Relief (FL350400, FL350500, FX350400, FL350402)
10	ST074302AV	Screw 5/16" -18 x 6"		ST073107AV	Strain Relief (FL350700, FX350700)
11	ST042400AV	Self Tapping Screw 10-24 x 5/16" (12 Used)		ST073108AV	Strain Relief (FL350401)
12	VS001400AV	Piston Pin (2 Used)	52	*ST009500AV	Socket Setscrew 1/4"-20 x 1/2"
13	PX001100AV	Compression Ring (4 Used)	53	PU009000BK	Motor Pulley (Used on FL350400, FL350401, FL350402)
14	VT005500AG	Piston (2 Used)		PU000900BK	Motor Pulley (Used on FL350500)
15	ST019700AV	Welch Plug (4 Used)		PU000100BK	Motor Pulley (Used on FX350400)
16	PX002200AV	Oil Ring (4 Used)		PU006500BK	Motor Pulley (Used on FL350700, FX350700)
17	*ST050100AV	Hex Head Cap Screw 1/4"-20 x 1 1/4" (4 Used)	54	BT005000AV	Poly V "J" Belt <del>39"</del> (Used on all except FL350500)
18	VT000100AG	Connecting Rod (2 Used)		BT004500AV	Poly V "J" Belt 41" (Used on FL350500)
19	VT000700AG	Cylinder	55	VT017100AV	Tube (Except FX350400)
20	VT013200AV	Filter Screen (2 Used)	56	*ST018300AV	Compression Connector
21	VT200401AJ	Crankcase Assembly (w/bearing)	57	BG013900AV	Belt Guard
22	*ST022000AV	Pipe Plug Hex Hd. 1/4"	58	BG011300AV	Belt Guard Channel
23	*ST023300AV	Pipe Plug Sq. Hd. 1/8"	59	BG014014AL	Belt Guard Bracket
24	*ST016000AV	Machine Bolt 5/16" -18 x 3/4" (4 Used on FL350500, FL350700, FX350700)	60	ST058500AV	Plascrew
	*ST016500AV	Self Tapping Screw 5/16" -18 x 3/4" (4 Used on FL350400, FL350401, FL350402, FX350400)	61	ST041600AV	Rubber Foot (2 Used)
25	ST068300AV	Bearing (2 Used)	62	*ST022500AV	Pipe Plug 1/4"-18
26	VT000600AG	Crankshaft	63	*ST030100AV	Drain Cock 1/4"-18
27	*KE000900AV	Key 3/16" x 1" (2 Used)	64	ST109003AV	Washer (2 Used)
28	XA003200AV	Bearing Cap Gasket	65	VT017300AV	Tube (Used on FL350400, FL350401, FL350402)
29	VT200301AJ	Bearing Cap Assy. with Bearing		VT017200AV	Tube (Used on FL350500, FL350700, FX350700)
30	ST021600AV	Oil Seal	66	VT018800AV	Tube (Used on FX350400)
31	*ST024200AV	Hex Hd. Cap Screw 1/4"-20 x 1/2"		*ST011701AV	Compression Connector (Not Used on FX350400)
32	PU000200BK	Flywheel (Used on FX350400, FL350700, FX350700)	67	*ST022400AV	Pipe Plug (Used on FX350400)
	PU006300BK	Flywheel (Used on FL350400, FL350401, FL350402, FL350500)	68	VT021500AV	Valve Restrictor (2 Used)
33	*ST026200AV	Setscrew 3/8"-16 x 3/4" Sq. Head	69	XA001400AV	Check Valve Gasket
34	*ST018700AV	5/16" -18 Hex Hd. (8 Used on FL350500, FL350700, FX350700)	70	VS001801AV	Flapper Valve (4 Used)
35	ST033400AV	Axle Bolt (2 Used)	71	XA008800AV	Gasket
36	WA002400AV	Wheel (2 Used on FL350400, FL350401, FL350402, FX350400)		*ST016000AV	Machine Bolt 5/16" -18 x 3/4" (4 Used on FL350500, FL350700, FX350700)
	WA002500AV	Wheel (2 Used on FL350500, FL350700, FX350700)	72	ST043200AV	Self Tapping Screw 5/16" -18 x 1/2" (4 Used on FL350400, FL350401, FL350402, FX350400)
37	PX002100AV	Expander (2 Used)		ST043200AV	Strain Relief (Used on FL350400, FL350500)
38	ST033500AV	Keps Nut (2 Used)		ST073107AV	Strain Relief (Used on FL350700)
39	*ST012200AV	Setscrew 1/4"-20 x 1/2" Sq. Head		ST073503AV	Strain Relief (Used on FL350402)
40	AR012406JA	Air Receiver (Used on FL350400, FL350401, FL350402)		ST073108AV	Strain Relief (Used on FL350401)
	AR012405JA	Air Receiver (Used on FX350400)	73	VT014400AV	Breather Vent Tube
	AR012401JA	Air Receiver (Used on FL350500, FL350700, FX350700)	74	VT014500AV	Vent Tube Filter
41	MC005600AV	Electric Motor (Used on FL350400, FL350401, FL350402)	75	ST051300AV	Screw 10-24 x 3/8" (2 Used)
	MC009400AV	Electric Motor (Used on FL350500)		VT210200AJ	<b>AVAILABLE ON REQUEST</b>
	MC015600AV	Electric Motor (Used on FX350400)		VT210300AJ	Gasket Kit
	MC005800AV	Electric Motor (Used on FL350700)		VT210400AJ	Valve Repair Kit
	MC014800AV	Electric Motor (Used on FX350700)		VT232700JA	Piston Ring Set
42	*ST011200AV	Washer 7/8" x 3/8" (4 Used)		HA212600AV	Replacement Pump
43	*ST033001AV	Compression Nut 1/2" Tube		ST033800AV	<b>NOT ILLUSTRATED</b>
44	ST067300AV	Compression Ferrule 1/2" Tube		ST012900AV	Hose 1/4" x 15'
45	CV201400AJ	Check Valve (Used on all Except FX350400)		ST033800AV	Ground Clip (Except FL350402)
	CV205000AV	Check Valve/Unloader (Used on FX350400)		ST012900AV	Motor Strain Relief (FL350401 only)
46	EC002101AV	Power Cord and Plug (115 Volt) (FL350400)		JB200101AV	Air Chuck (Except FX350400, FX350700)
	EC007301AV	Power Cord and Plug (230 Volt) (FL350500)		ST043000AV	Lockwasher (FL350402 only)
	EC008100AV	Power Cord and Plug (115 Volt) (FL350401)		ST051400AV	Screw (FL350402 only)
	EC002103AV	Power Cord and Plug (115 Volt) (FL350402)		ST053200AV	Nut (FL350402 only)
	EC004301AV	Power Cord and Plug (230 Volt) (FL350700)			
47	VS001000AV	Handle			

\*Standard hardware item may be purchased locally. MINIMUM BILLING \$5.00

## WHEN ORDERING REPAIR PARTS, ALWAYS GIVE THE FOLLOWING INFORMATION

- The Part Number
- The Model Number
- The Part Name
- The Name of Product