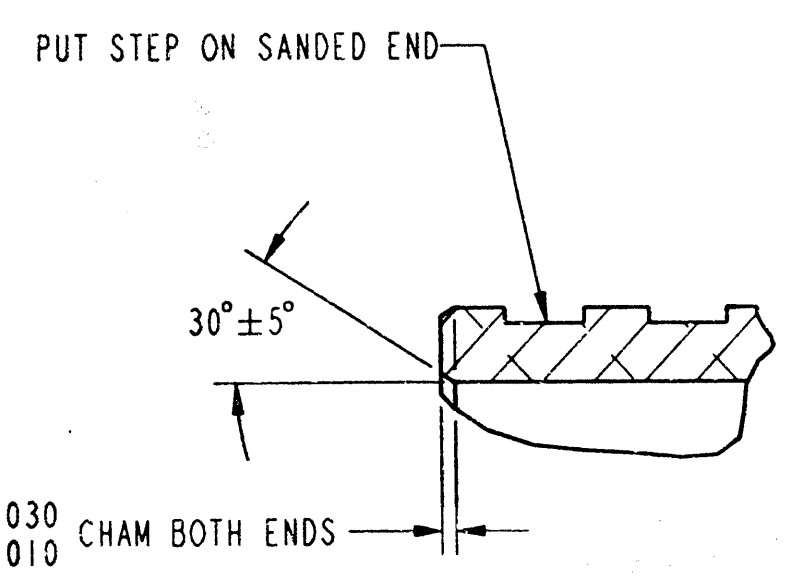
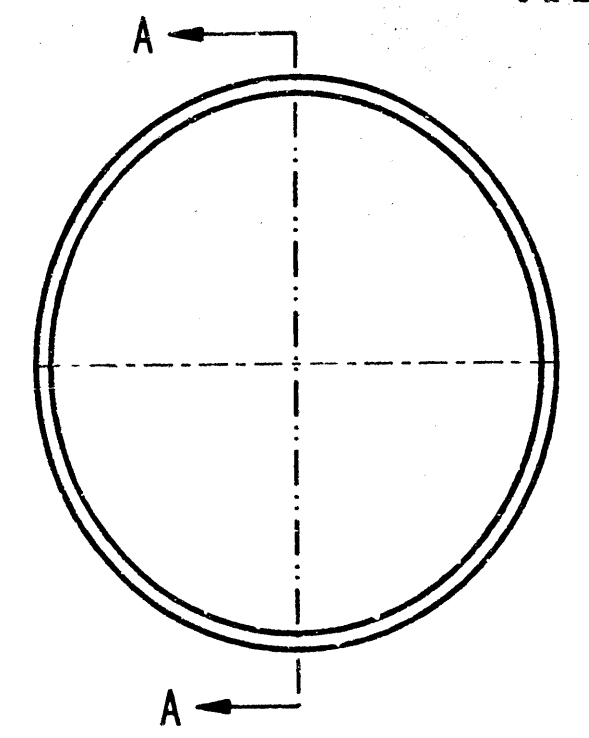
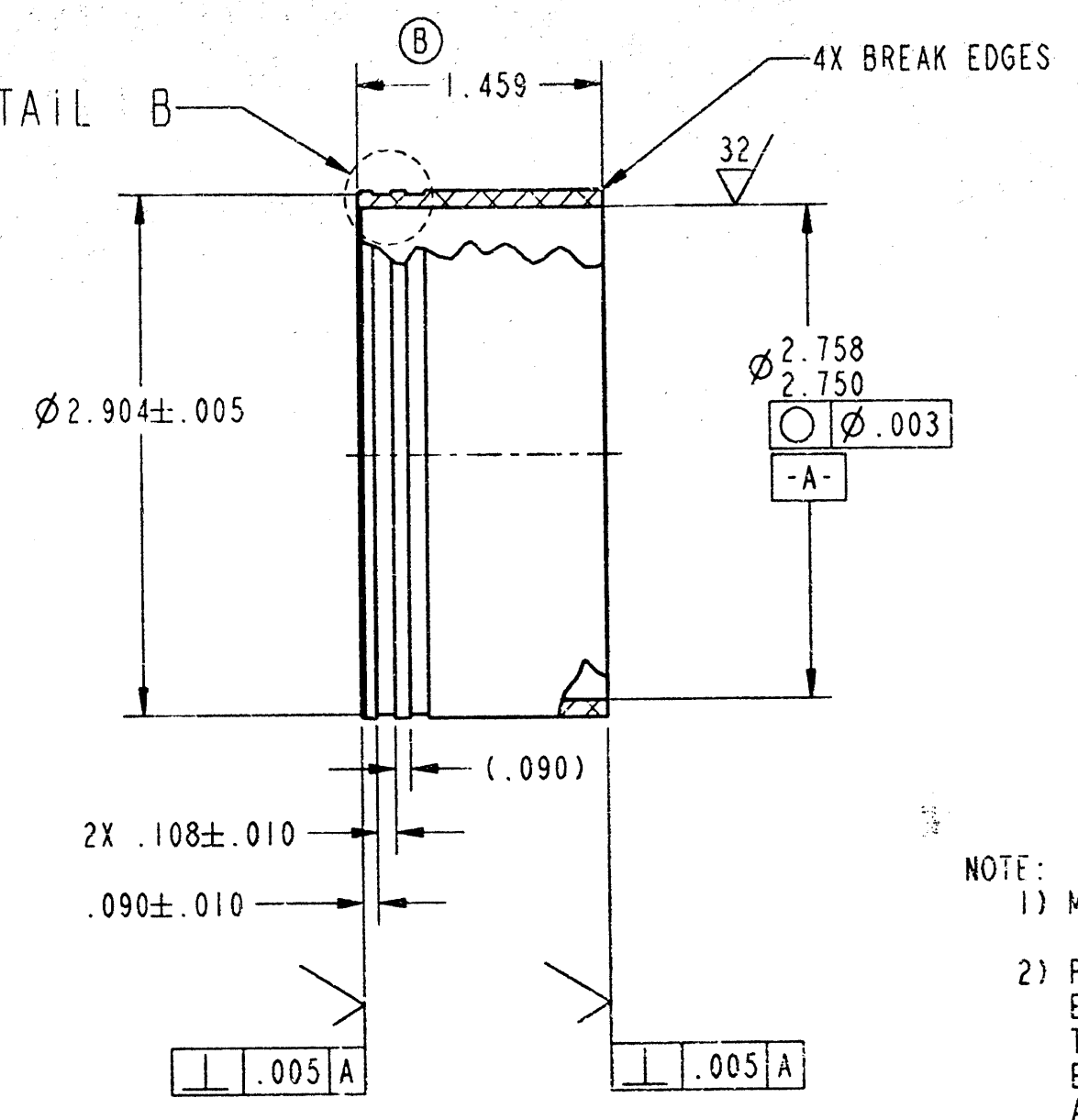


KEY	DATE	ECN NO.	REVISION
A	6-19-03	03-1129	REVISED AND REDRAWN TO PRO-E
A	6-19-07	03-1129	F WAS FC
B	10/19/04	04-1395	1.459 WAS 1.459±.002



DETAIL B
SCALE 4X



SECTION A-A

- NOTE:
- 1) MAKE FROM M618114
 - 2) PARTS TO BE FREE FROM BURRS, SHARP EDGES, CHIPS, OILS, CRACKS, SPLITS, TEARS, DIE LINES AND OTHER DEFECTS EXCEEDING .001 INCHES ARE NOT ACCEPTABLE
 - 3) BALL BURNISH I.D. WITH Ø 2.758 BALL (BY T.I.)

THIS DRAWING CONFORMS TO RIETSCHLE THOMAS SHEBOYGAN PUMPS & COMPRESSORS PRODUCT ENGINEERING STANDARD 210. GENERAL DRAFTING STANDARD.		TOLERANCES UNLESS OTHERWISE SPECIFIED: SURFACE FINISH SPECIFIED IN Ra ALL ANGLES ±2°		OWN. CARL	DATE 7-2-96	<p>Rietschle Thomas A Thomas Industries Co.</p>
PRE-PRODUCTION NO.	ALL RADII	.X ±	FMEA DOCUMENT	DATE	THIS DRAWING AND THE INFORMATION DISCLOSED HEREON ARE CONFIDENTIAL AND PROPRIETARY TO RIETSCHLE THOMAS INDUSTRIES INC. AND SHALL NOT BE REPRODUCED, DISCLOSED OR USED FOR MANUFACTURE, BY ANY PERSON OR ENTITY WITHOUT THE PRIOR WRITTEN CONSENT OF RIETSCHLE THOMAS INDUSTRIES INC.	
INITIAL USAGE: MODEL	ALL FILLETS	.XX ±	N	DATE		
REL. FOR PROD. DATE: 3-26-96	ALL DRAFT	.XXX ± .003	SCALE	DATE		
SUPERSEDES: 618110 "B"		CONTROL CHARACTERISTIC	FULL	PART NO.		RE
SUPERSEDED BY		TITLE: CYLINDER SLEEVE		618110		B