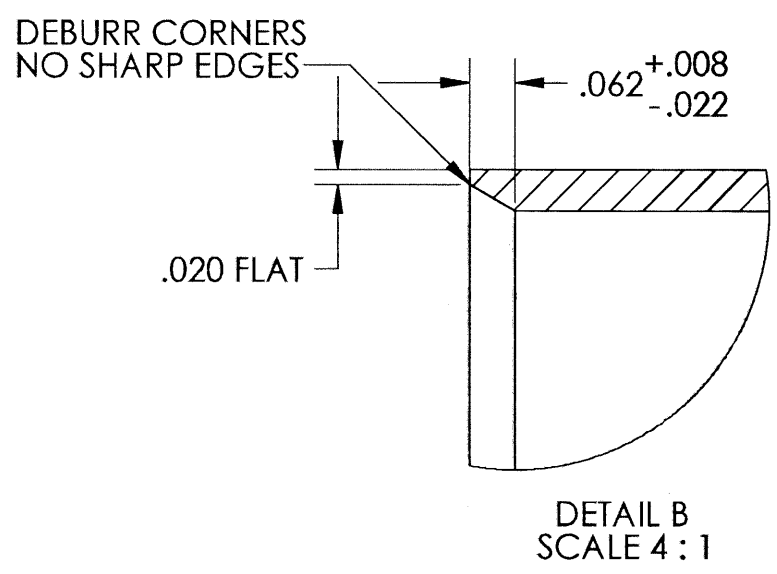
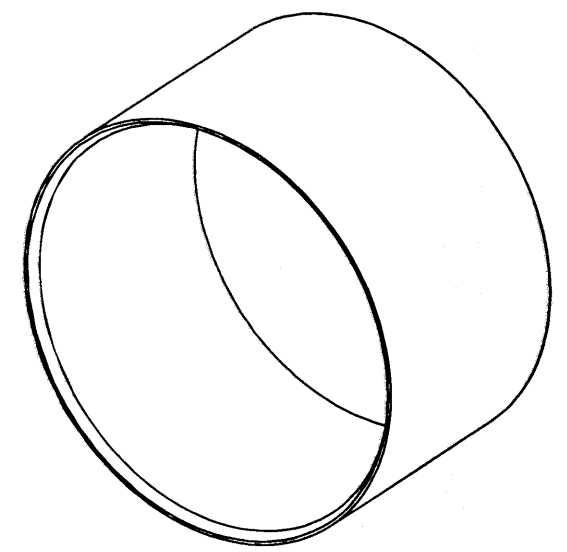
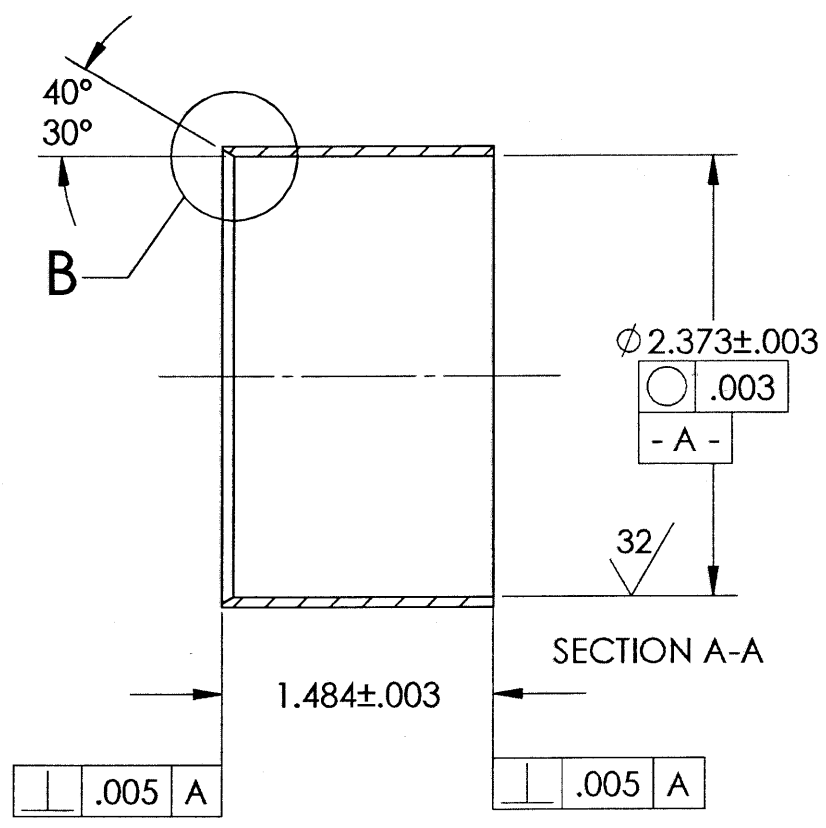
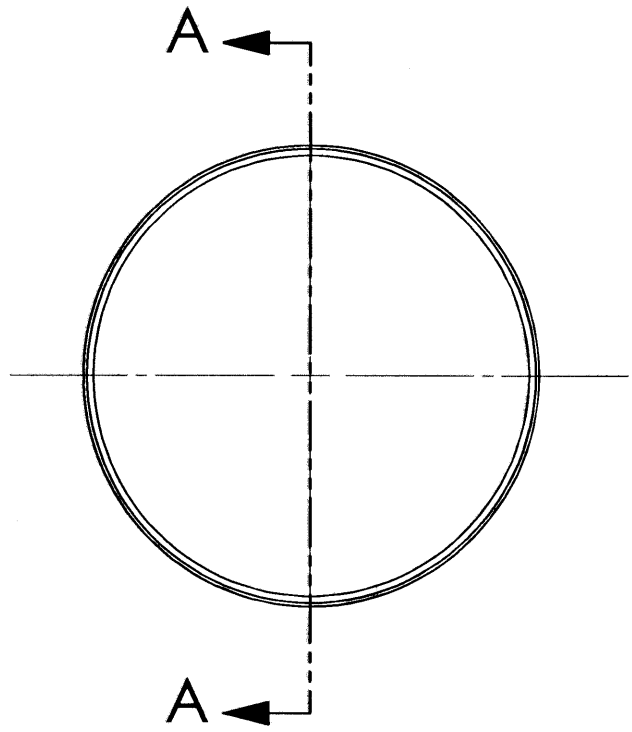


1		PART NO. 615505	
INT			
REVISION			
ECN NO.			
DATE			
KEY			
INT	MAN		
REVISION			
REDRAWN TO SOLIDWORKS			
ECN NO.	06-1282		
DATE	8/31/06		
KEY	-		



- NOTES:
- 1) MAKE FROM: M615746
 - 2) PARTS TO BE FREE FROM BURRS, CHIPS, OIL, CRACKS, SPLITS, TEARS, DIE LINES AND OTHER DEFECTS EXCEEDING .001 ARE NOT ACCEPTABLE.
 - 3) BALL BURNISH I.D. WITH $\phi 2.376$ BALL (BY T. I.)

THIS DRAWING CONFORMS TO GARDNER DENVER THOMAS INC. PRODUCT ENGINEERING STANDARD 210, GENERAL DRAFTING STANDARD. CREATED IN SOLIDWORKS		TOLERANCES UNLESS OTHERWISE SPECIFIED: SURFACE FINISH SPECIFIED IN Ra ALL ANGLES $\pm 2^\circ$		DRAWN BY LCD		DATE 4/4/88		THOMAS A Gardner Denver Product Sheboygan, WI U.S.A.	
PRE-PRODUCTION NO.		ALL RADII ALL FILLETS ALL DRAFT		FMEA N		DATE 4/3/88 MED DOC N			
INITIAL USAGE: MODEL		CONTROL CHARACTERISTIC		SCALE 1:1					
REL FOR PROD:	DATE: 5-5-88	ECN OR DEV. NO: 88-605	TITLE CYLINDER SLEEVE		F		PART NO. 615505		REV D
SUPERSEDES: 615505 "B" SIZE		ECN NO. 97-787							
SUPERSEDED BY		ECN NO.							

A

B

C

D