

MODEL 325 LEGEND

RC-325-1-1000, ORIGINAL PLAIN MACHINE.

RC-325-1-1001, MACHINES WITH LOADLESS STARTING

RC-325-1-1002, MACHINES WITH PILOT UNLOADER

RC-325-1-1003, MACHINES WITH HAND UNLOADER.

RC-325-1-1004, MACHINES WITH CLUTCH ASSEMBLY, 14" PULLEY.

RC-325-1-1005, MACHINES WITH CLUTCH ASSEMBLY, 16" PULLEY.

RC-325-2-1006, PILOT UNLOADER CHANGE. (9-1-50)

NO 5018-X PILOT ASSEMBLIES REPLACED BY PILOTS NO. 5280-X2,
5280-X3 OR 5280-X4. 5280-X ASSEMBLIES WILL INTERCHANGE WITH
ASSEMBLIES 3254 AND 5018-X.

RC-325-3-1007, PILOT UNLOADER CHANGE (6-1-51)

NO. 5280-X PILOT ASSEMBLIES REPLACED BY PILOTS NO. 3254-X2,
3254-X3 OR 3254-X4. 3254-X ASSEMBLIES WILL INTERCHANGE WITH
ANY PREVIOUS ASSEMBLIES.

RC-325-4-1008, L.P. DISCHARGE VALVE AND INTAKE & DIS-
CHARGE COVER PLATE CHANGE (1-15-54)

DISCHARGE BUMPER NO. 1820 REPLACED BY BUMPER NO. 5747
STUD NO. 1851 REPLACED BY POST NO. 5746. HOLD DOWN SCREW
NO. 2622 AND NUT NO. 2623 REPLACED BY HOLD DOWN SCREW NO.
5745 AND NUT NO. 5744. INTAKE COVER PLATE NO. 1816 AND
DISCHARGE COVER PLATE NO. 3115 REPLACED BY COVER PLATE
NO. 5739. SPACER NO. 5742 ADDED. COTTER PIN NO. 1661 ELIMINATED.

RC-325-4-1009, MACHINES WITH LOADLESS STARTING.

RC-325-4-1010, MACHINES WITH V.D. PILOT UNLOADER

L.P. INTAKE UNLOADER TYPE COVER PLATE NO. 1817 USED
IN PLACE OF COVER PLATE NO. 5739. SPACED NO. 5742
ELIMINATED.

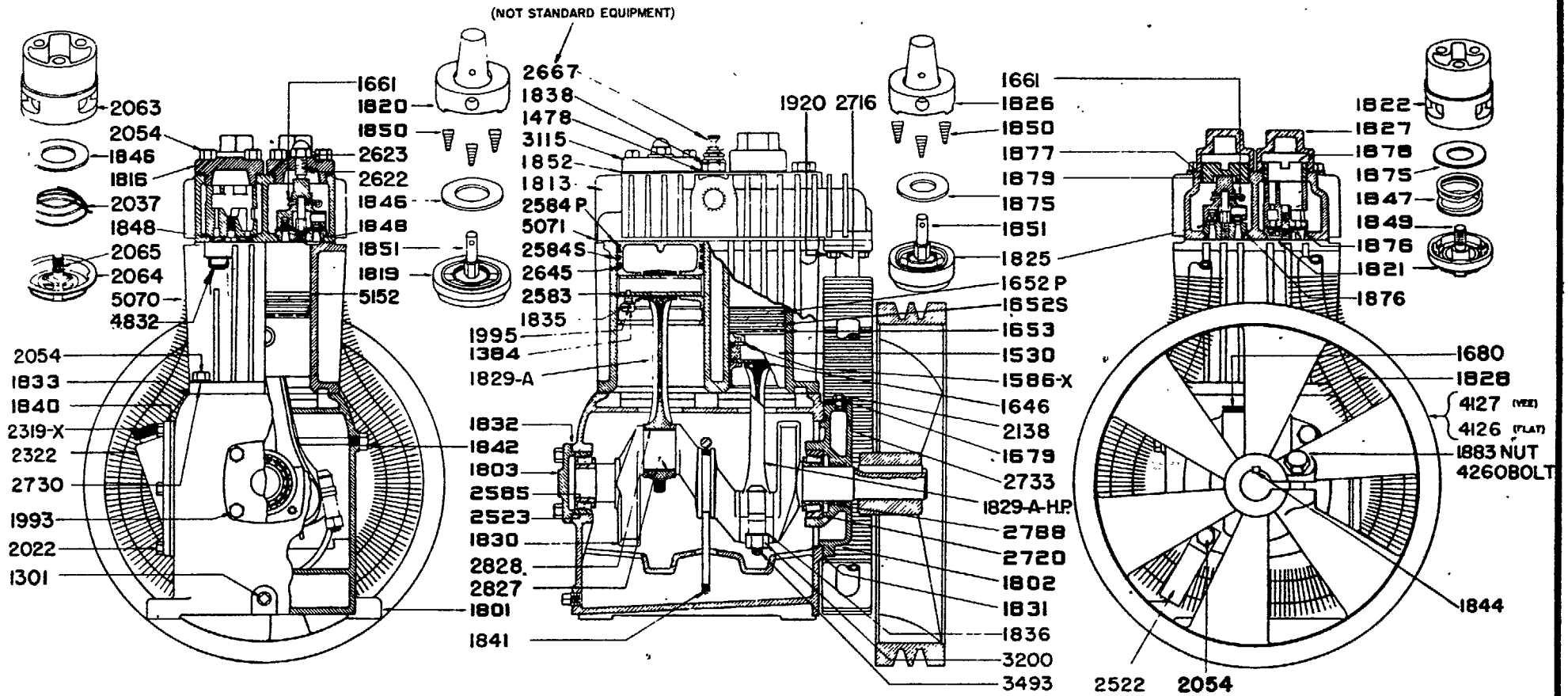
RC-325-4-1011, MACHINES WITH HAND UNLOADER.

RC-325-5-1012, PILOT UNLOADER CHANGE. (8-1-56)

NO. 3254-X PILOT ASSEMBLY REPLACED BY PILOT NO. 6168-X.
NO. 6168-X WILL INTERCHANGE WITH ANY PREVIOUS ASSEMBLY.

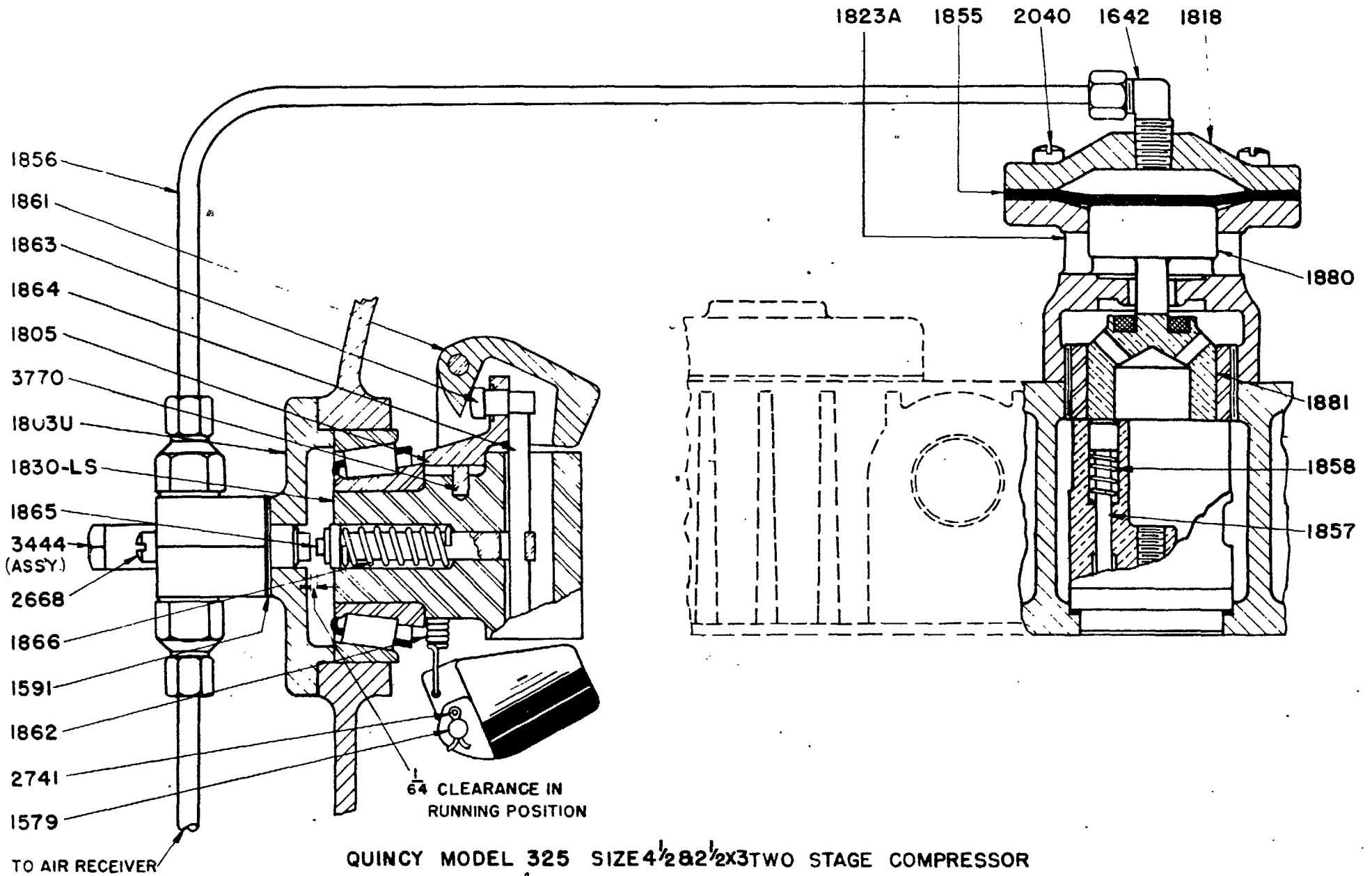
MODEL 325 LEGEND

RC NO.	CHANGE	DWG. NO.	TYPE MACHINE	RC NO.	CHANGE	DWG. NO.	TYPE MACHINE
NOTE	FOR CONNECTING ROD REPAIRS ON MACHINES BUILT UNDER ANY RECORD UP TO AND INCLUDING NO. 5, USE CONNECTING ROD NO. 1829-B WITH BUSHING NO. 6455 ON THE LOW PRESSURE SIDE. USE CONNECTING ROD NO. 1829-B-H.P. WITH BUSHING NO. 6453 ON THE HIGH PRESSURE SIDE. CRANKPIN LINER BEARINGS NO. 2827 AND 2828 ARE USED ON BOTH THE LOW AND HIGH PRESSURE CONNECTING RODS. WHILE IT IS NOT ABSOLUTELY NECESSARY, IT IS RECOMMENDED THAT THESE RODS BE REPLACED IN PAIRS.						
6	<p>BEGINNING WITH CHANGE RECORD NO. 6 THE SPLASH TYPE LUBRICATION SYSTEM IS REPLACED BY A VANE TYPE OIL PUMP. THIS CHANGES THE ENTIRE LUBRICATION SYSTEM AND RELATED PARTS.</p> <p>ON LOADLESS STARTING MACHINES THE 3 WAY VALVE NO. 3444 IS REPLACED BY HYDRAULIC UNLOADER NO. 6278-X. THIS ELIMINATES THE CENTRIFUGAL UNLOADER FLYWEIGHTS AND RELATED PARTS.</p> <p>L.P. SUCTION VALVE ASSEMBLY NO. 2063-X REPLACED BY SUCTION VALVE ASSEMBLY 1815-X.</p> <p>ON L.P. SUCTION AND DISCHARGE VALVE ASSEMBLIES, COVER PLATE NO. 5739 REPLACED BY COVER PLATE NO. 5906. SPACER NO. 5742 REPLACED BY 5918. VALVE HOLD DOWN SCREWS NO. 5745 AND NUTS NO. 5744 REPLACED BY HOLD DOWN SCREW NO. 5916 AND NUT NO. 2623.</p> <p>ON MACHINES WITH V.D. PILOT, UNLOADER TYPE COVER PLATE NO. 1817 REPLACED BY COVER PLATE NO. 5907 AND DIAPHRAGM UNLOADER BODY NO. 5908. UNLOADER KICKOFF PIN NO. 2066 REPLACED BY PIN NO. 1857. UNLOADER PISTON NO. 1880 ELIMINATED. DISC NO. 5910, LOCKSCREW NO. 5909 AND PLUNGER PIN NO. 5920 ADDED. 8-8-57</p>	30020	PLAIN MACHINE				
		30021	HAND UNLOADER				
		30022	LOADLESS STARTING				
		30023	V. D. PILOT				
		30024	DUAL CONTROL				
		30025	DUAL CONTROL WITH VALVE				
NOTE	FOR CONNECTING ROD REPAIRS ON MACHINES BUILT UNDER CHANGE RECORD NO. 6, USE CONNECTING ROD NO. 6442 WITH BUSHING NO. 6443 ON THE LOW PRESSURE SIDE. USE CONNECTING ROD NO. 6442-H.P. WITH BUSHING NO. 6440 ON THE HIGH PRESSURE SIDE. CRANKPIN LINER BEARINGS NO. 6444 SHOULD BE USED ON BOTH THE LOW AND HIGH PRESSURE CONNECTING RODS. IT IS RECOMMENDED THAT THESE RODS BE REPLACED IN PAIRS.						
7	<p>LOW PRESSURE CONNECTING ROD NO. 1829-A WITH BUSHING NO. 1835 REPLACED BY CONNECTING ROD NO. 6442 WITH BUSHING NO. 6443. HIGH PRESSURE CONNECTING ROD NO. 1829-A-H.P. WITH BUSHING NO. 1646 REPLACED BY CONNECTING ROD NO. 6442-H.P. WITH BUSHING NO. 6440. LOW AND HIGH PRESSURE LINER BEARINGS NO. 2828 REPLACED BY LINER BEARINGS NO. 6444.</p>	30020-1	PLAIN MACHINE				
		30021-1	HAND UNLOADER				
		30022-1	LOADLESS STARTING				
		30023-1	V.D. PILOT				
		30024-1	DUAL CONTROL				
		30025-1	DUAL CONTROL WITH VALVE				



QUINCY MODEL 325 SIZE 4½&2½X3 TWO STAGE AIR COMPRESSOR
 QUINCY COMPRESSOR CO., QUINCY, ILL.

DATE ISSUED _____
 RC325-1-1000

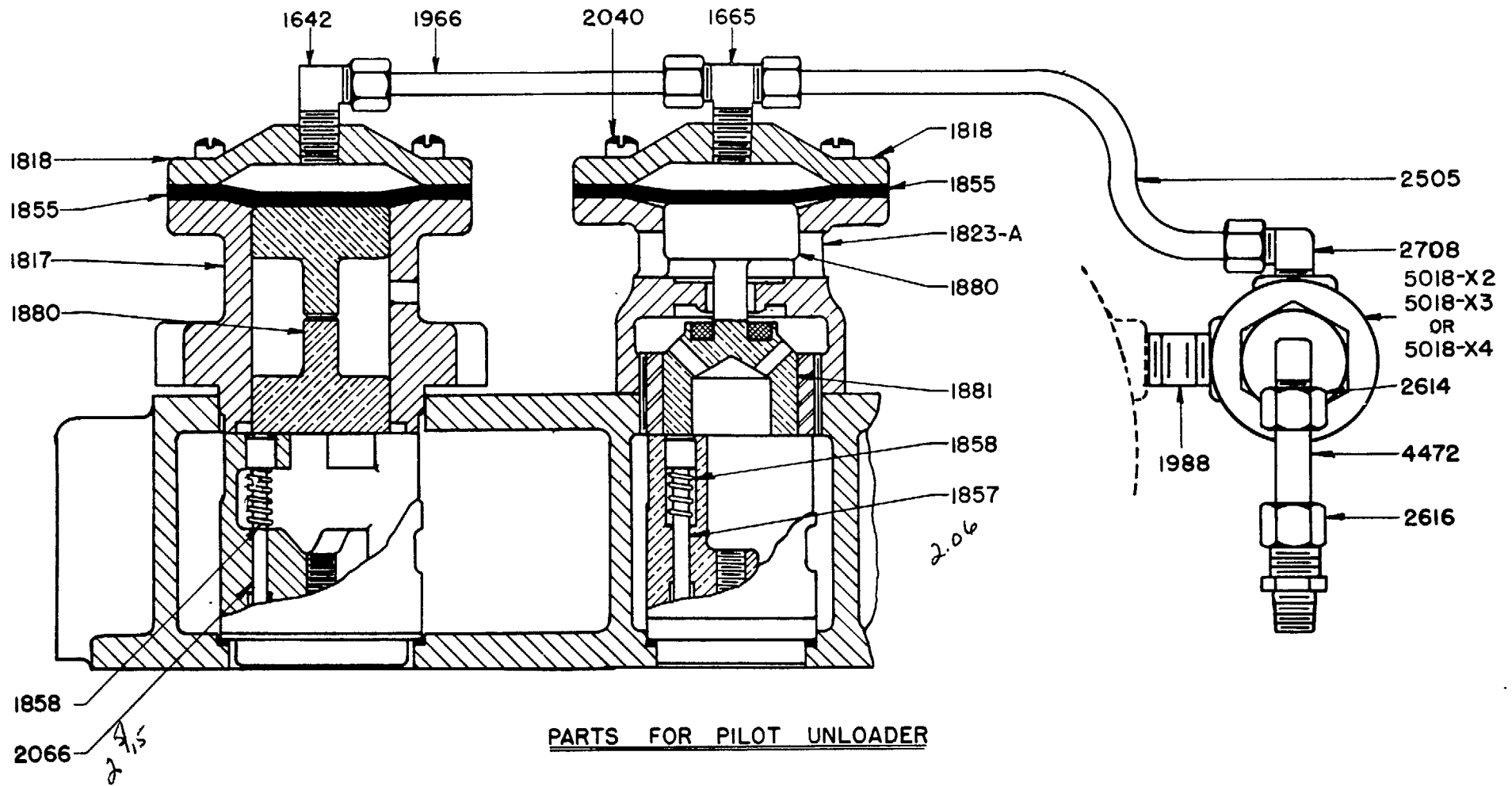


QUINCY MODEL 325 SIZE $4\frac{1}{2} \times 2\frac{1}{2} \times 3$ TWO STAGE COMPRESSOR

with **LOADLESS STARTING**

QUINCY COMPRESSOR CO., QUINCY, ILL.

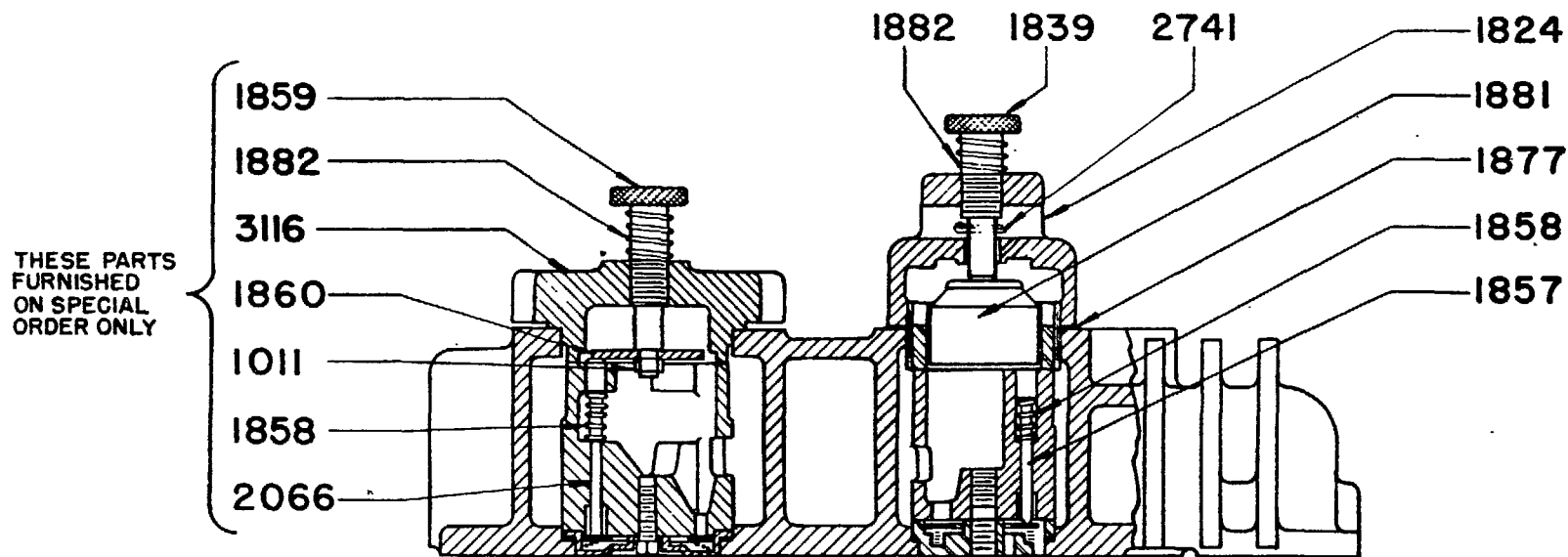
DATE ISSUED	_____
RC-325-1-1001	



QUINCY MODEL 325 SIZE 4½x2½x3 TWO STAGE COMPRESSOR

QUINCY COMPRESSOR CO., QUINCY, ILL.

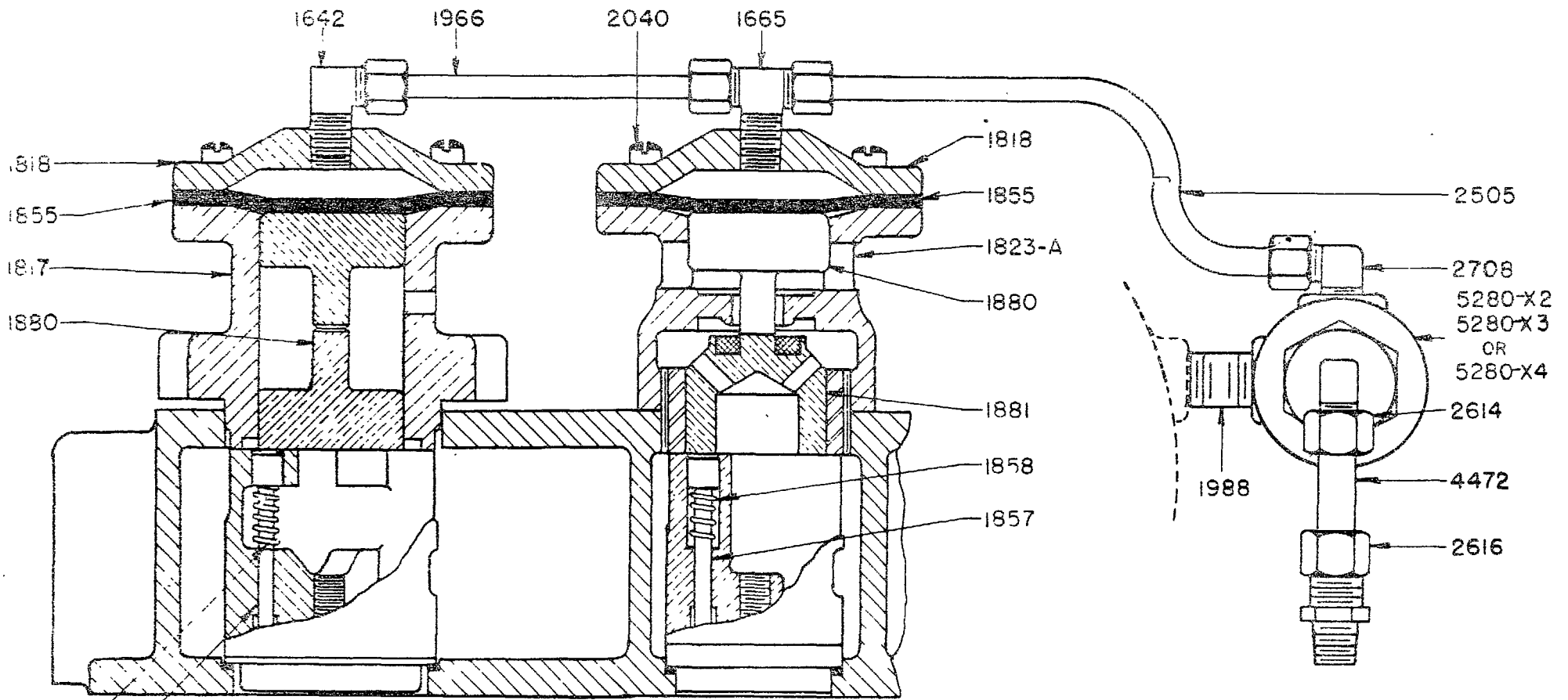
DATE ISSUED
RC-325-1-1002



PARTS FOR HAND UNLOADER
(HIGH & LOW PRESSURE SIDES)

QUINCY MODEL 325 SIZE 4½ & 2½ X 3 AIR COMPRESSOR
QUINCY COMPRESSOR CO., QUINCY, ILL.

DATE ISSUED _____
RC325-1-1093

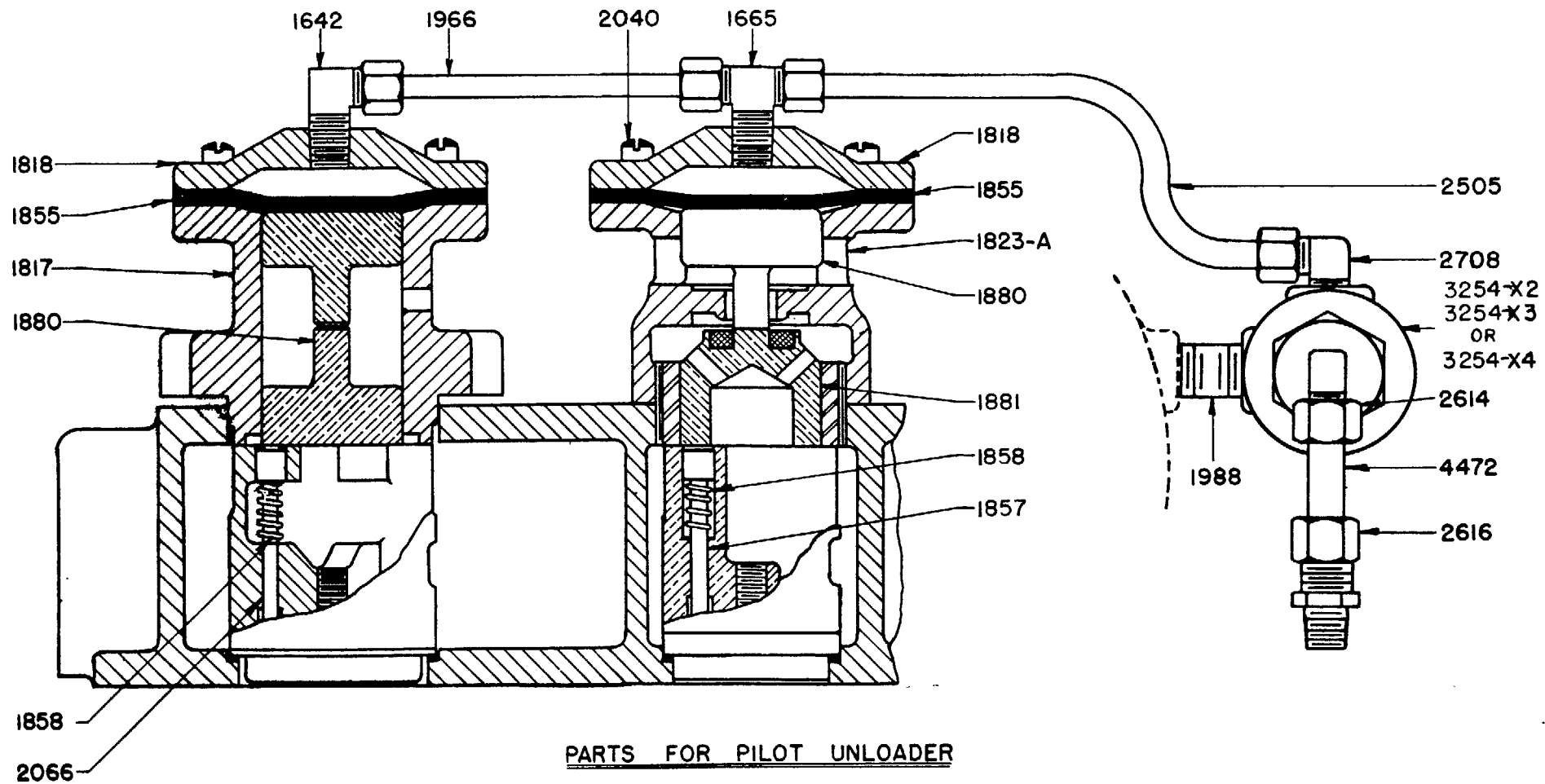


PARTS FOR PILOT UNLOADER

QUINCY MODEL 325 SIZE 4½ 8½X3 TWO STAGE COMPRESSOR

QUINCY COMPRESSOR CO., QUINCY, ILL.

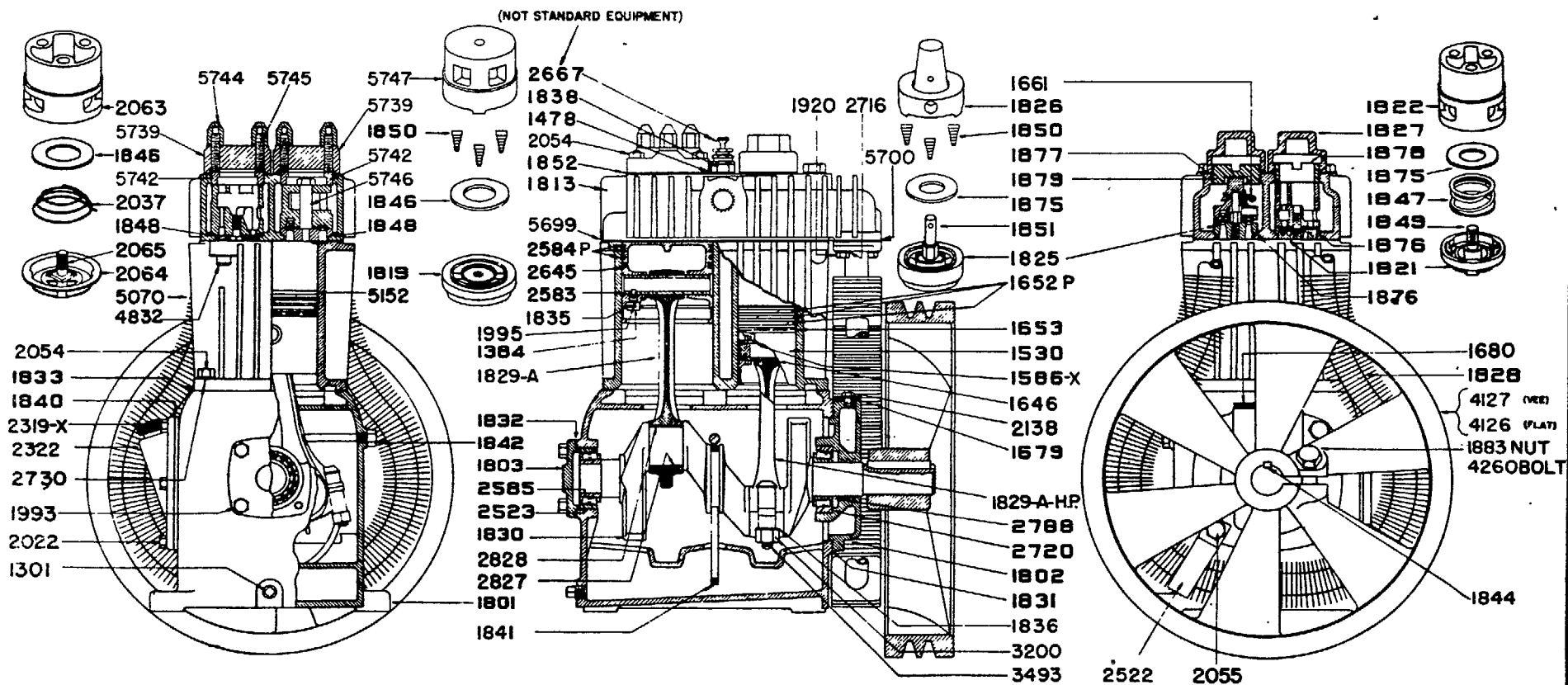
DATE ISSUED _____
RC-325-2-1006



QUINCY MODEL 325 SIZE 4½&2½X3 TWO STAGE COMPRESSOR

QUINCY COMPRESSOR CO., QUINCY, ILL.

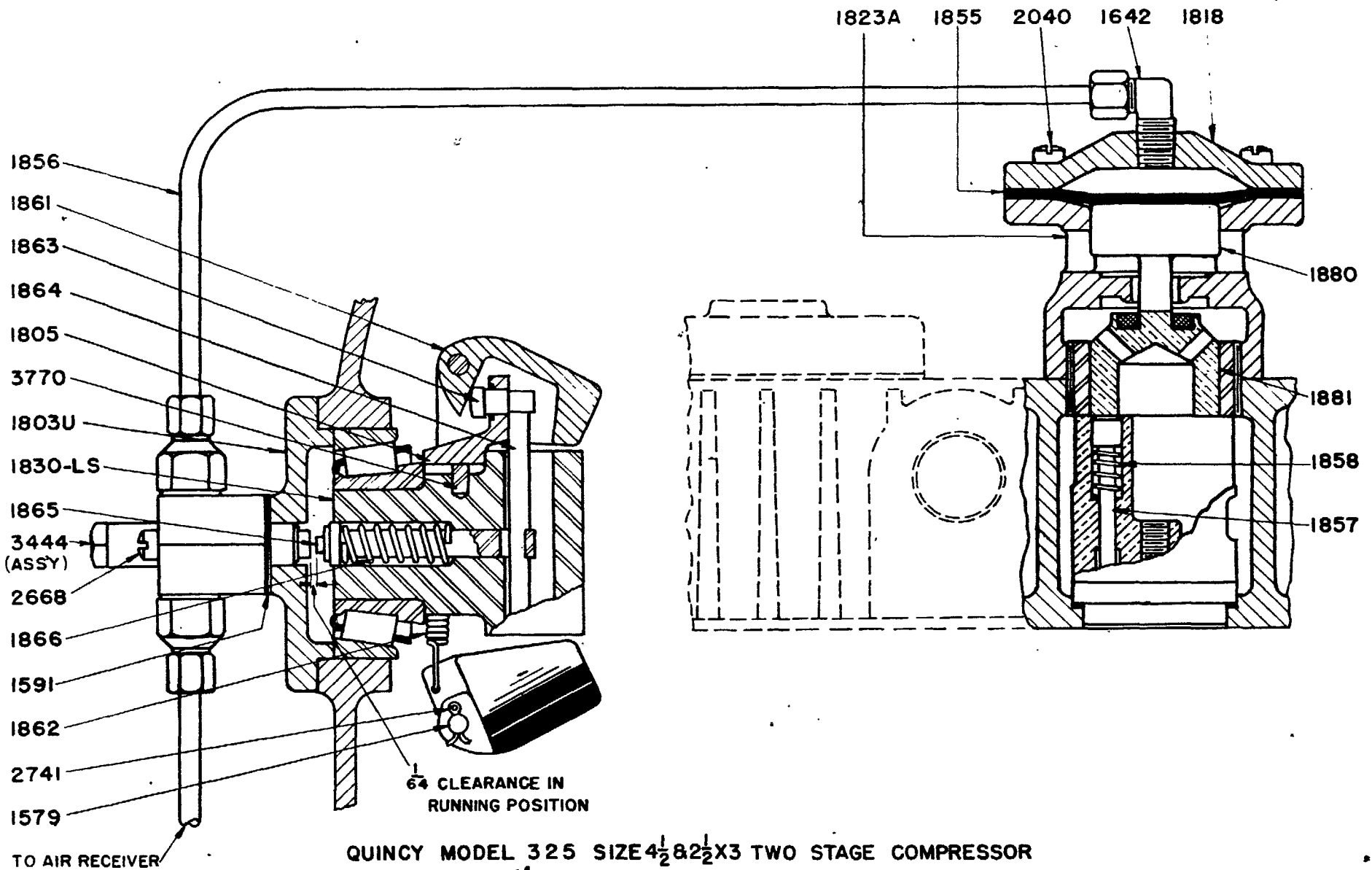
DATE ISSUED _____
RC-325-3-1007



QUINCY MODEL 325 SIZE 4½x8½x3 TWO STAGE AIR COMPRESSOR
 QUINCY COMPRESSOR CO., QUINCY, ILL.

DATE ISSUED _____

RC325-4-1008

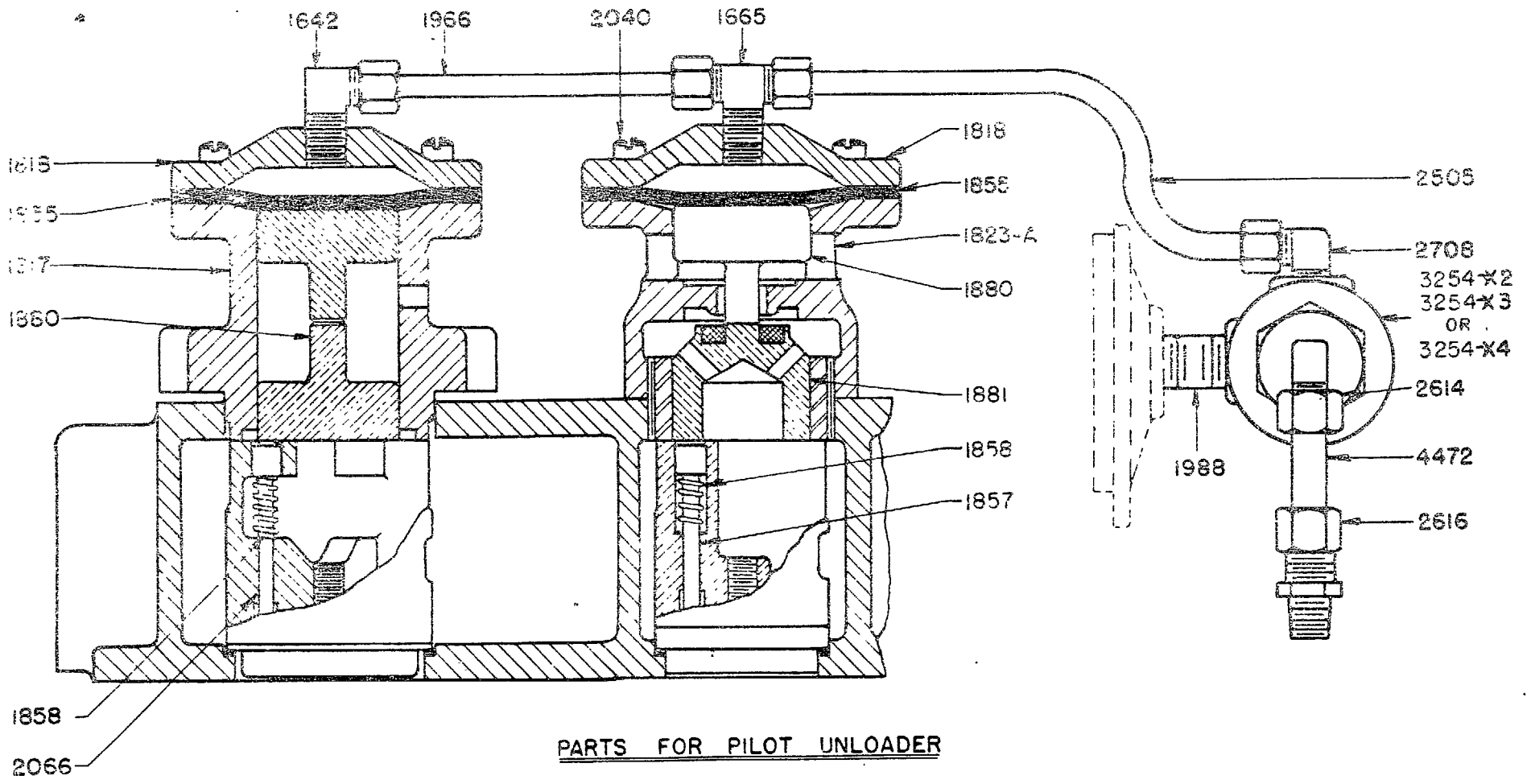


QUINCY MODEL 325 SIZE 4½ & 2½ X 3 TWO STAGE COMPRESSOR

with **LOADLESS STARTING**

QUINCY COMPRESSOR CO., QUINCY, ILL.

DATE ISSUED _____
RC-325-4-1009



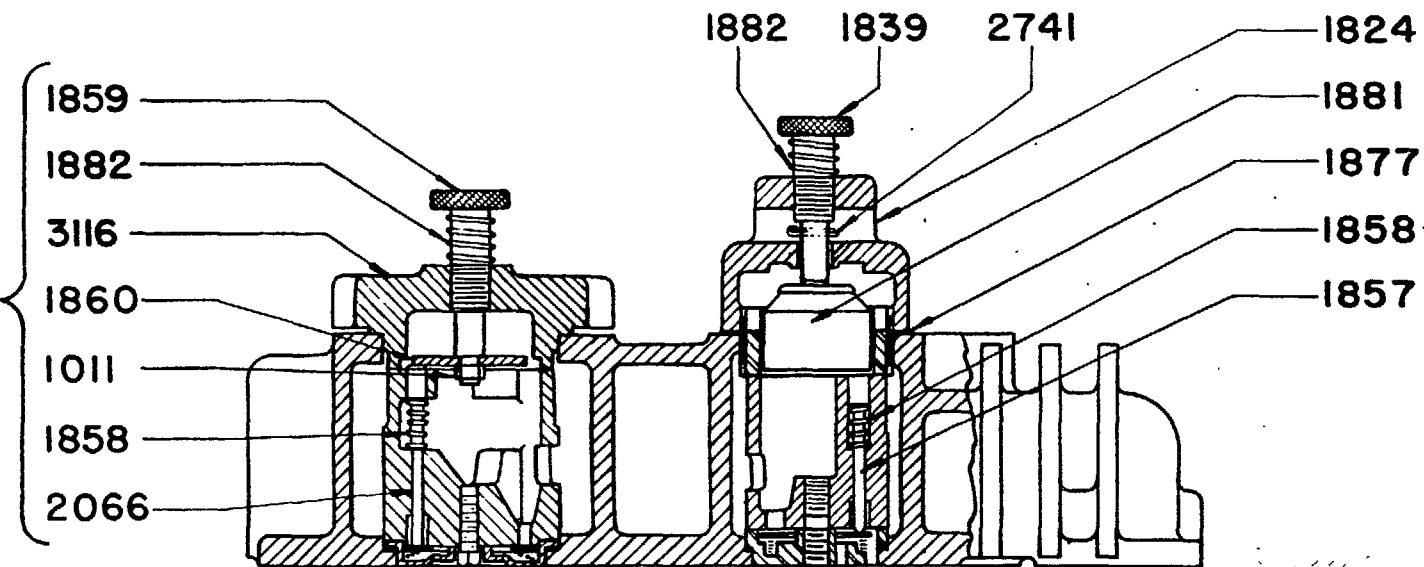
QUINCY MODEL 325 SIZE $4\frac{1}{2} \times 2\frac{1}{2} \times 3$ TWO STAGE COMPRESSOR

QUINCY COMPRESSOR CO., QUINCY, ILL.

DATE ISSUED _____

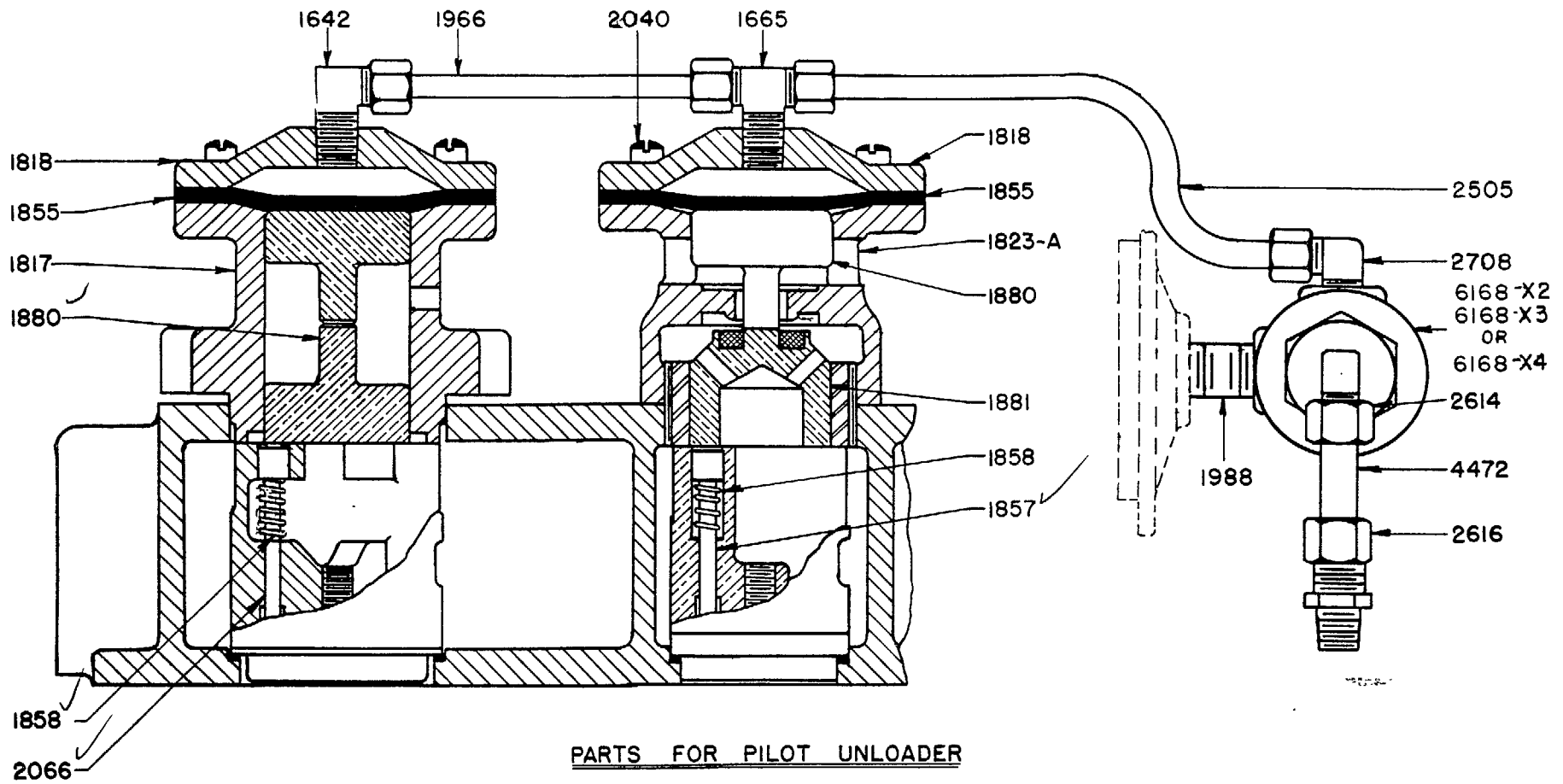
RC-325-4-1010

THESE PARTS
FURNISHED
ON SPECIAL
ORDER ONLY



PARTS FOR HAND UNLOADER
(HIGH & LOW PRESSURE SIDES)

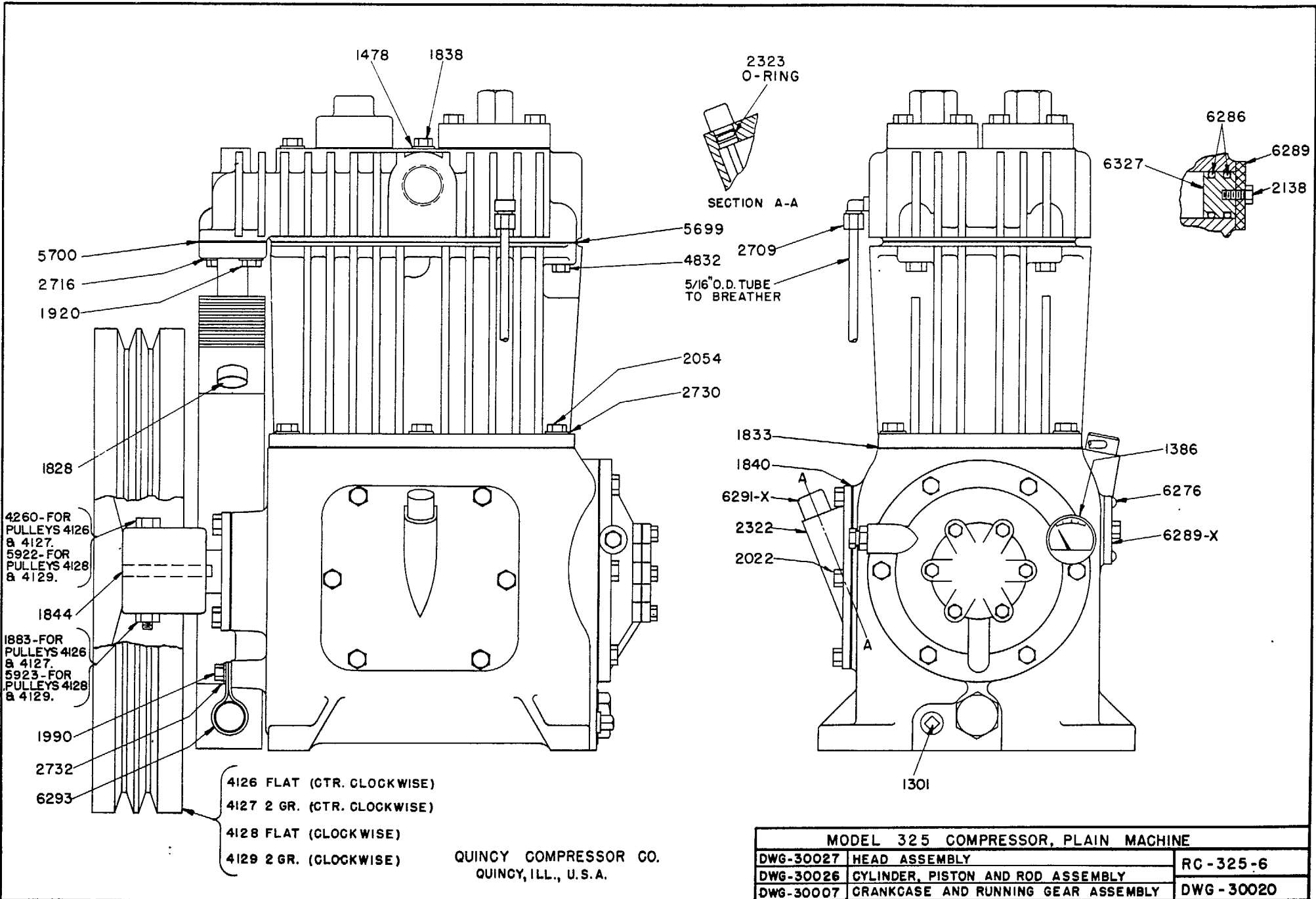
QUINCY MODEL 325 SIZE 4½ 82½ X 3 AIR COMPRESSOR
QUINCY COMPRESSOR CO., QUINCY, ILL.



QUINCY MODEL 325 SIZE 4 1/2 x 2 1/2 x 3 TWO STAGE COMPRESSOR

QUINCY COMPRESSOR CO., QUINCY, ILL.

DATE ISSUED
RC-325-5-1012



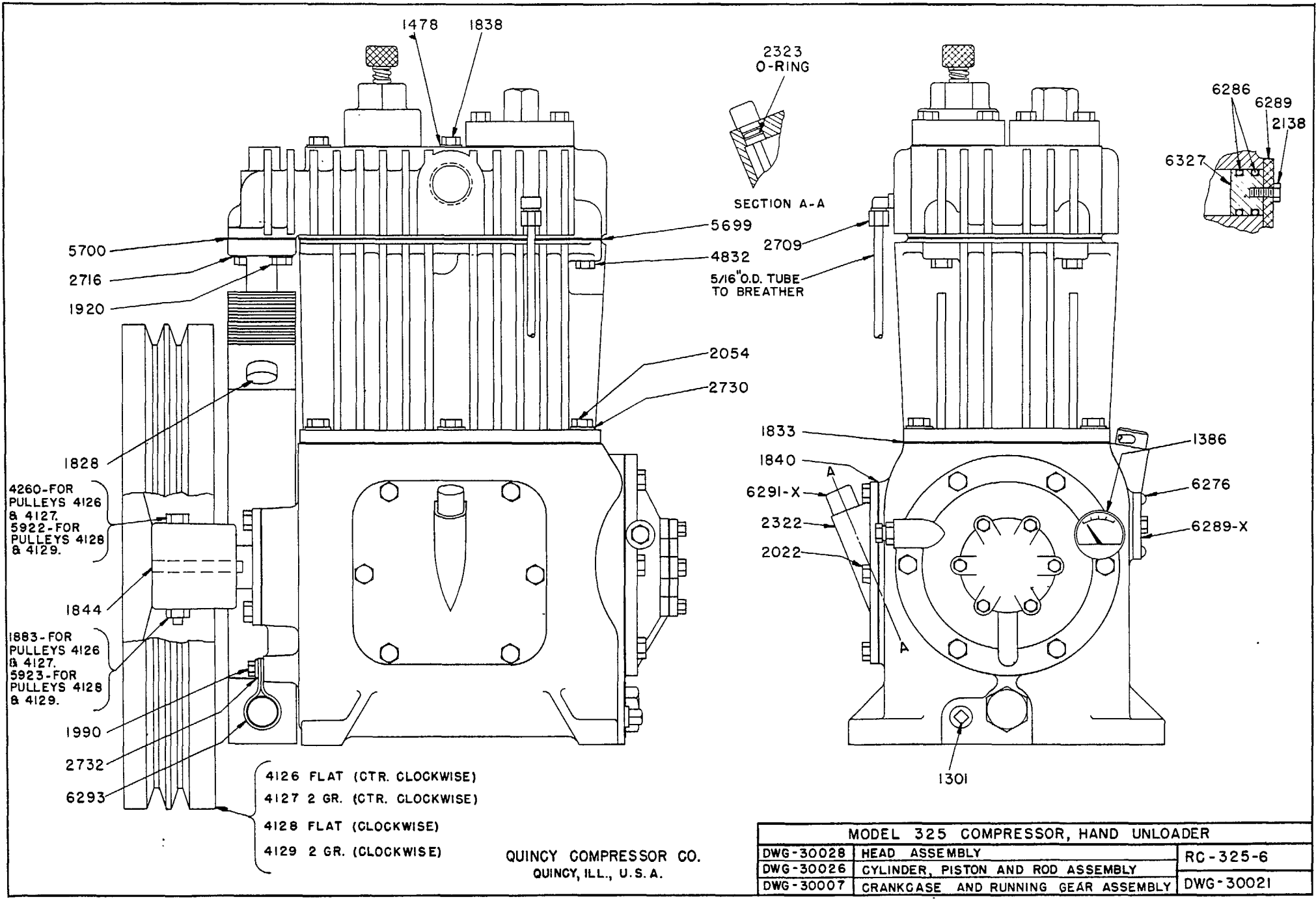
4260 - FOR PULLEYS 4126 & 4127.
5922 - FOR PULLEYS 4128 & 4129.

1883 - FOR PULLEYS 4126 & 4127.
5923 - FOR PULLEYS 4128 & 4129.

4126 FLAT (CTR. CLOCKWISE)
4127 2 GR. (CTR. CLOCKWISE)
4128 FLAT (CLOCKWISE)
4129 2 GR. (CLOCKWISE)

QUINCY COMPRESSOR CO.
QUINCY, ILL., U.S.A.

MODEL 325 COMPRESSOR, PLAIN MACHINE		
DWG-30027	HEAD ASSEMBLY	RC-325-6
DWG-30026	CYLINDER, PISTON AND ROD ASSEMBLY	
DWG-30007	CRANKCASE AND RUNNING GEAR ASSEMBLY	DWG-30020



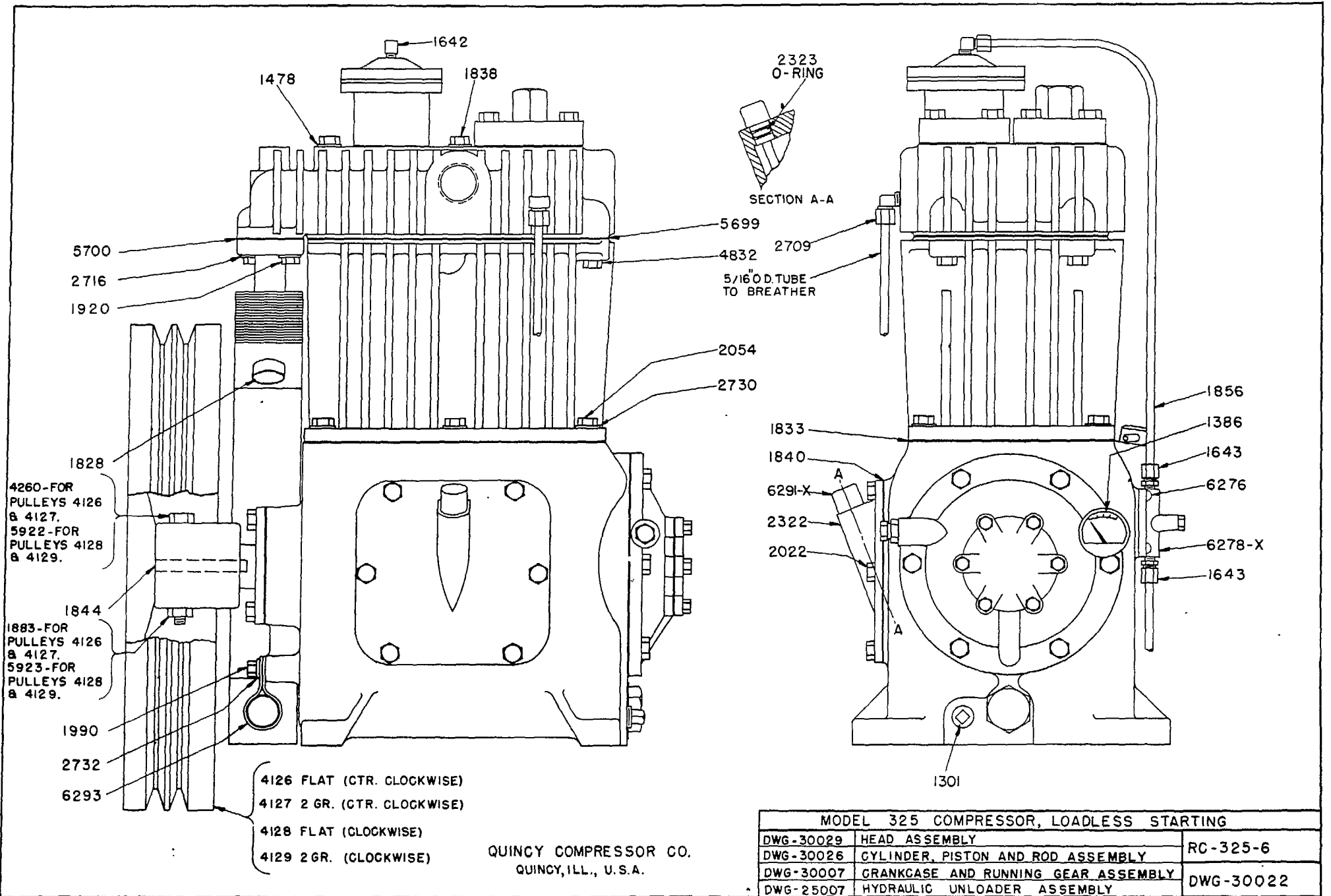
4260-FOR
PULLEYS 4126
& 4127.
5922-FOR
PULLEYS 4128
& 4129.

1883-FOR
PULLEYS 4126
& 4127.
5923-FOR
PULLEYS 4128
& 4129.

4126 FLAT (CTR. CLOCKWISE)
4127 2 GR. (CTR. CLOCKWISE)
4128 FLAT (CLOCKWISE)
4129 2 GR. (CLOCKWISE)

QUINCY COMPRESSOR CO.
QUINCY, ILL., U. S. A.

MODEL 325 COMPRESSOR, HAND UNLOADER		
DWG-30028	HEAD ASSEMBLY	RC-325-6
DWG-30026	CYLINDER, PISTON AND ROD ASSEMBLY	
DWG-30007	CRANKCASE AND RUNNING GEAR ASSEMBLY	DWG-30021



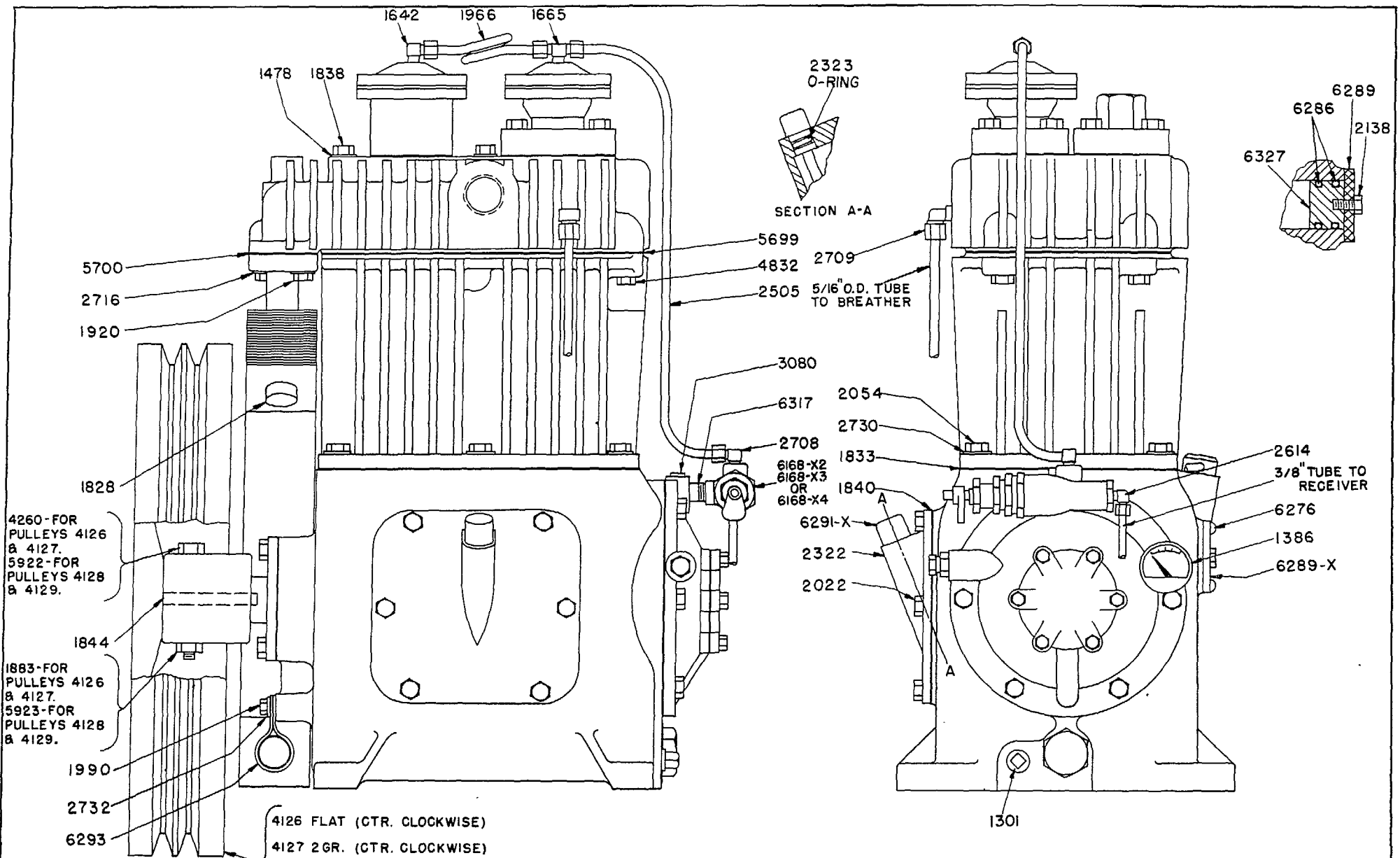
4260-FOR
PULLEYS 4126
& 4127.
5922-FOR
PULLEYS 4128
& 4129.

1844
1883-FOR
PULLEYS 4126
& 4127.
5923-FOR
PULLEYS 4128
& 4129.

4126 FLAT (CTR. CLOCKWISE)
4127 2 GR. (CTR. CLOCKWISE)
4128 FLAT (CLOCKWISE)
4129 2 GR. (CLOCKWISE)

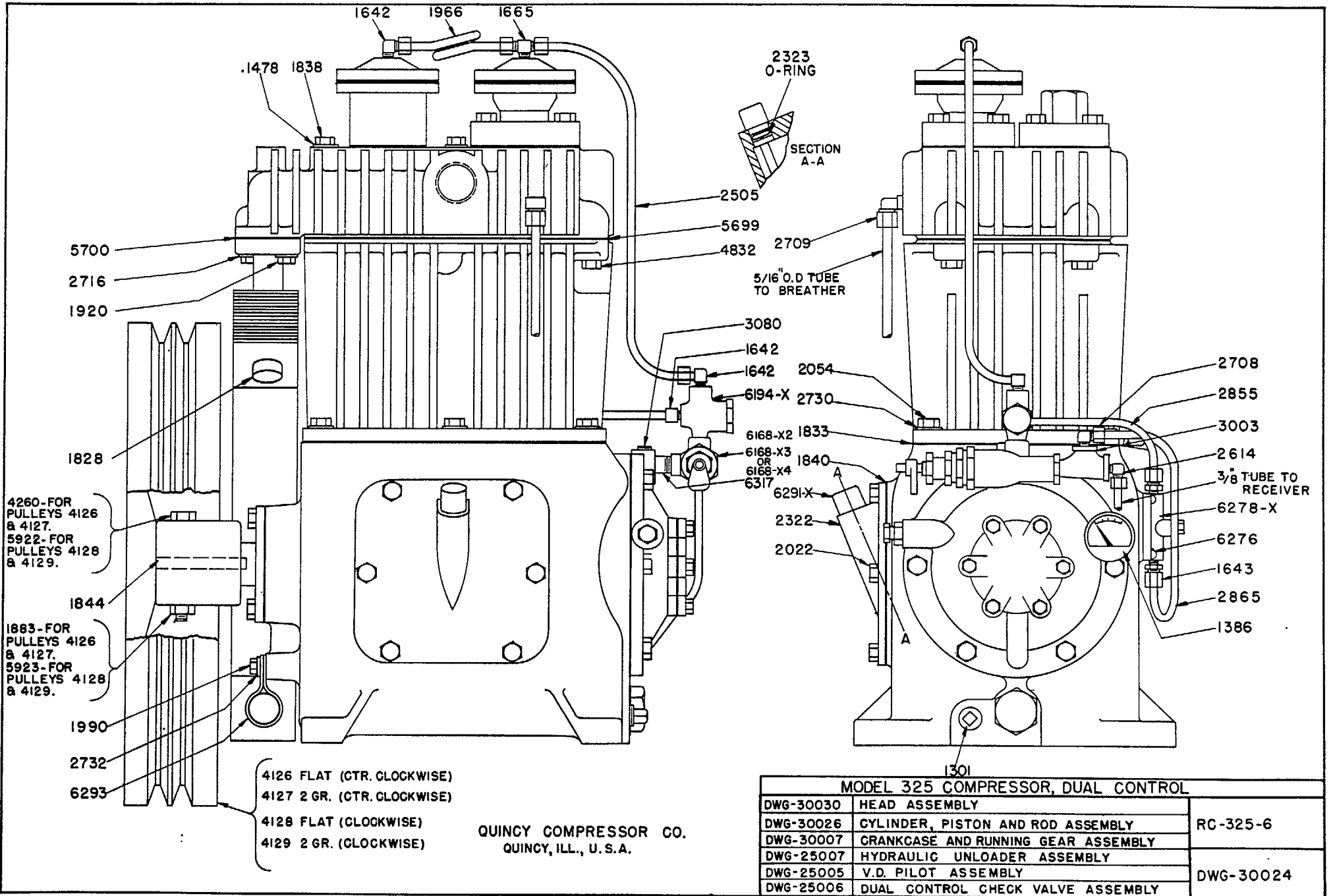
QUINCY COMPRESSOR CO.
QUINCY, ILL., U.S.A.

MODEL 325 COMPRESSOR, LOADLESS STARTING		
DWG-30029	HEAD ASSEMBLY	RC-325-6
DWG-30026	CYLINDER, PISTON AND ROD ASSEMBLY	
DWG-30007	CRANKCASE AND RUNNING GEAR ASSEMBLY	DWG-30022
DWG-25007	HYDRAULIC UNLOADER ASSEMBLY	

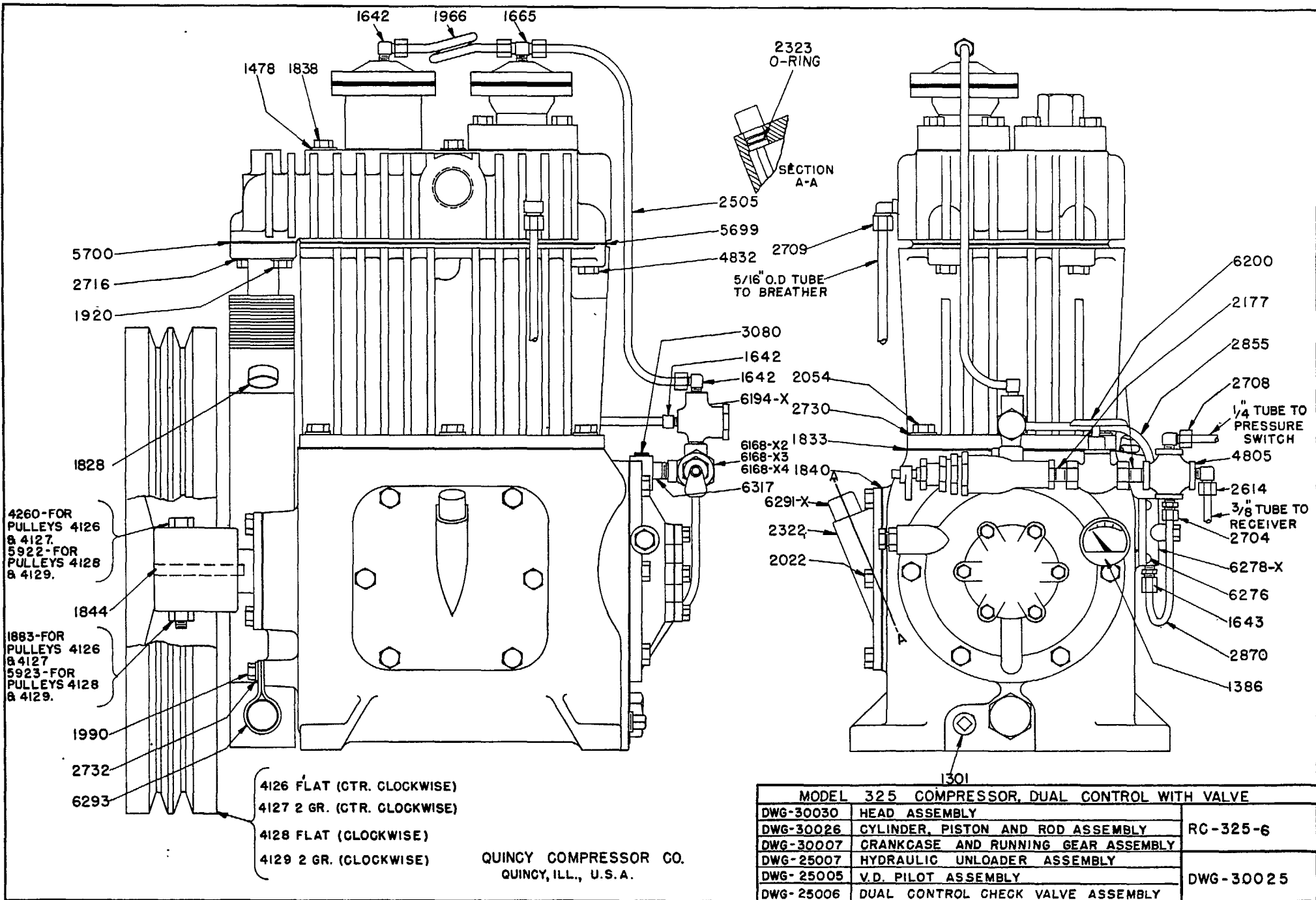


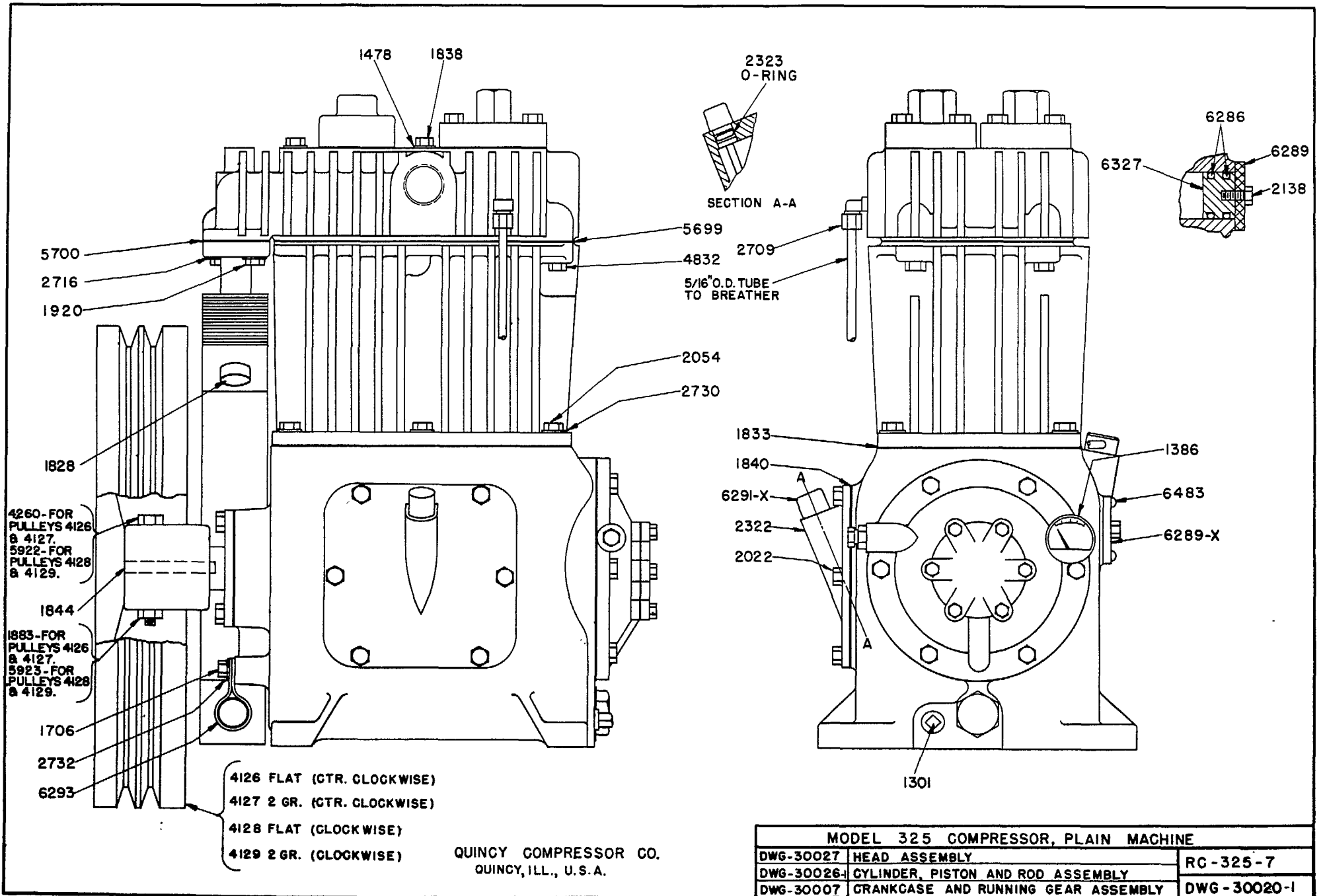
QUINCY COMPRESSOR CO.
QUINCY, ILL., U.S.A.

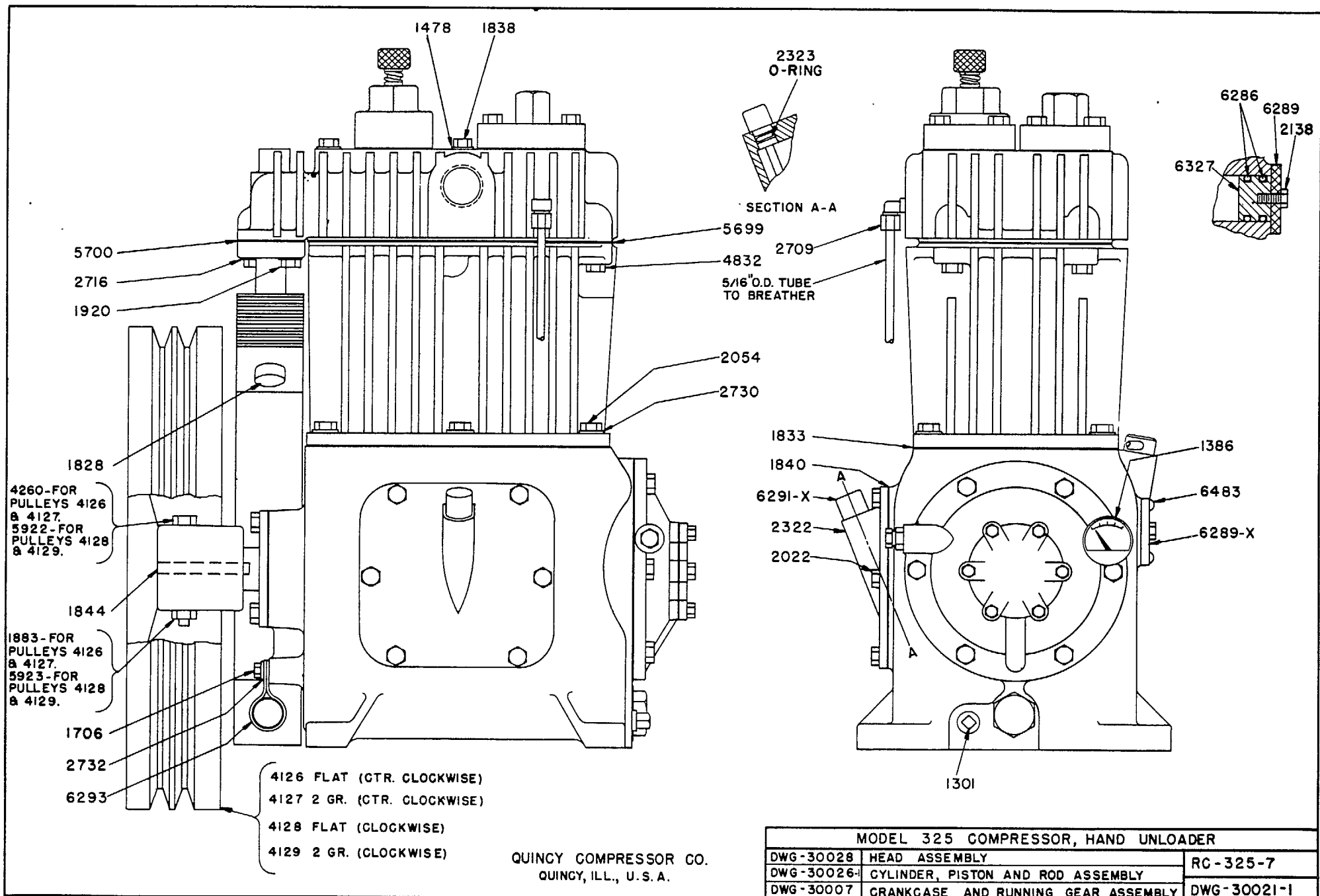
MODEL 325 COMPRESSOR, V.D. PILOT		
DWG-30030	HEAD ASSEMBLY	RC-325-6
CWG-30026	CYLINDER, PISTON AND ROD ASSEMBLY	
DWG-30007	CRANKCASE AND RUNNING GEAR ASSEMBLY	DWG-30023
DWG-25005	V.D. PILOT ASSEMBLY	

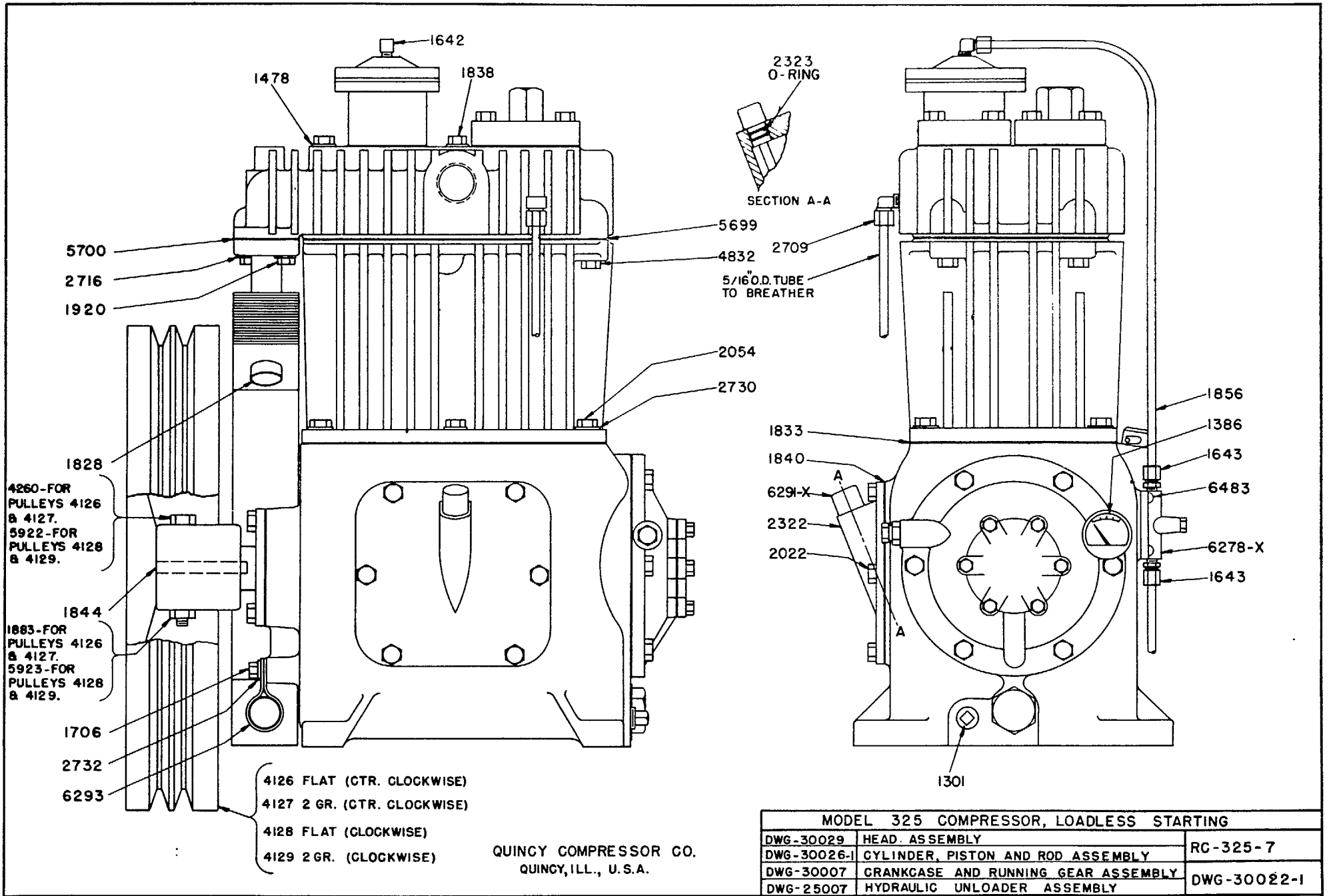


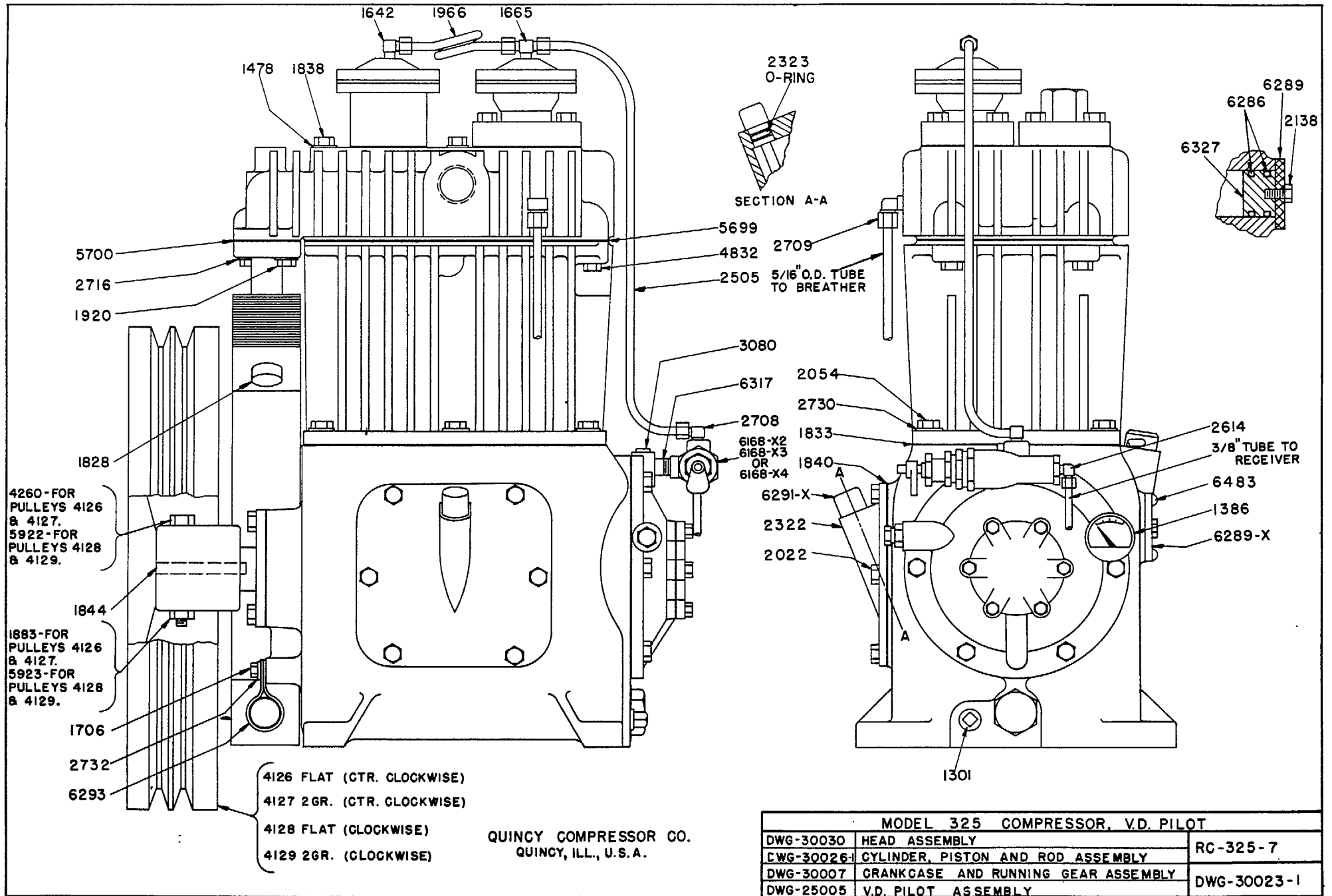
MODEL 325 COMPRESSOR, DUAL CONTROL		
DWG-30030	HEAD ASSEMBLY	
DWG-30026	CYLINDER, PISTON AND ROD ASSEMBLY	RC-325-6
DWG-30007	CRANKCASE AND RUNNING GEAR ASSEMBLY	
DWG-25007	HYDRAULIC UNLOADER ASSEMBLY	
DWG-25005	V.D. PILOT ASSEMBLY	DWG-30024
DWG-25006	DUAL CONTROL CHECK VALVE ASSEMBLY	

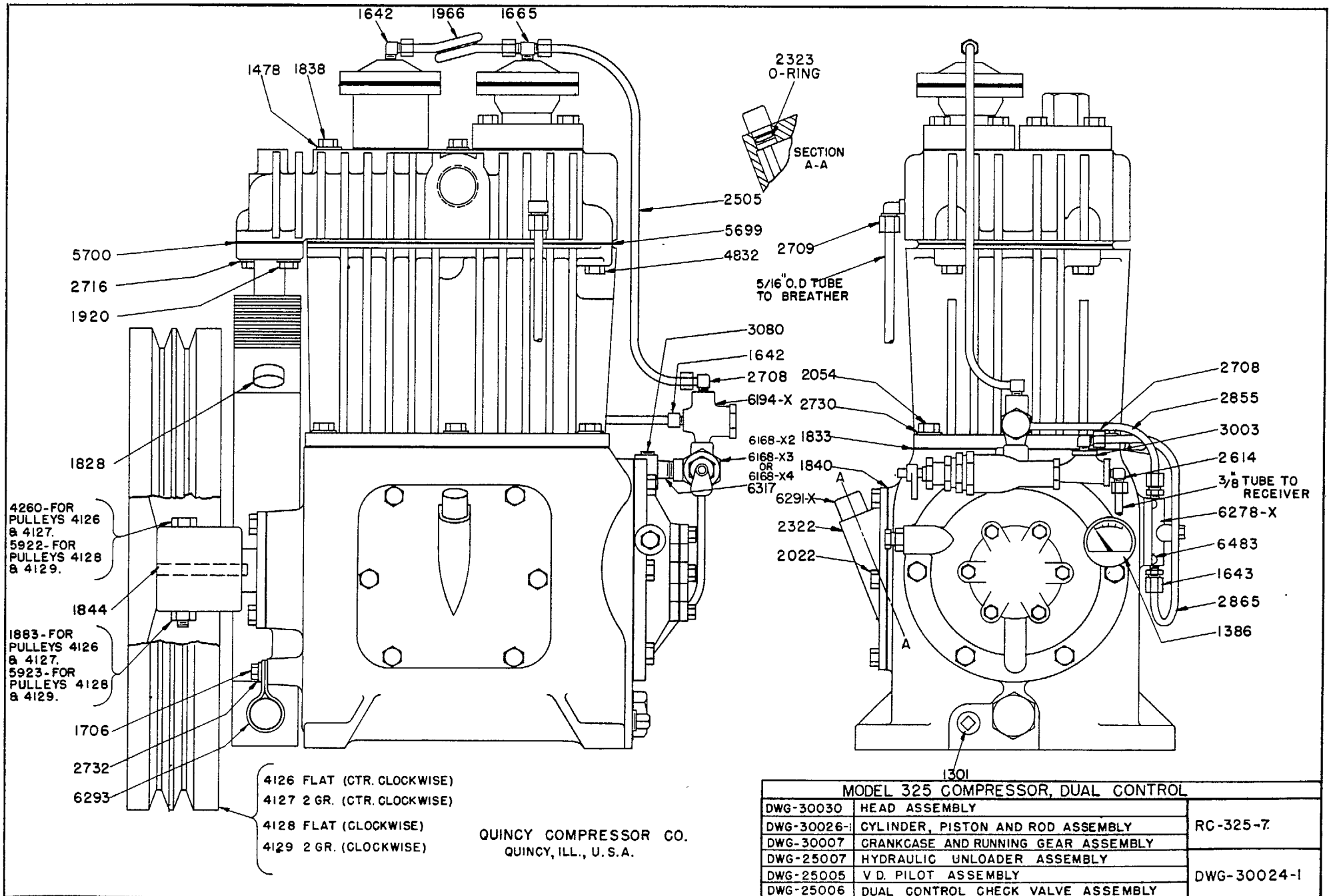


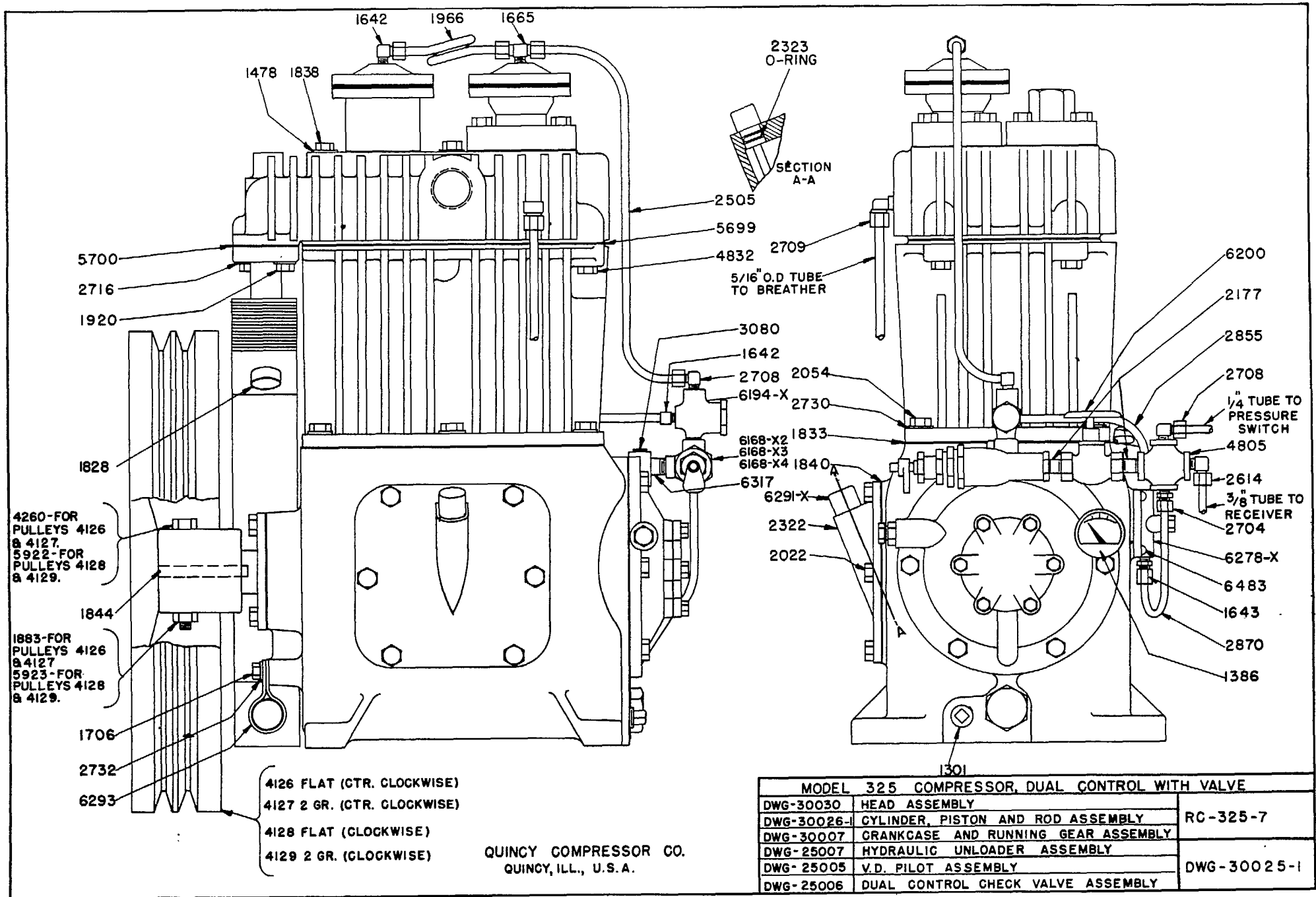


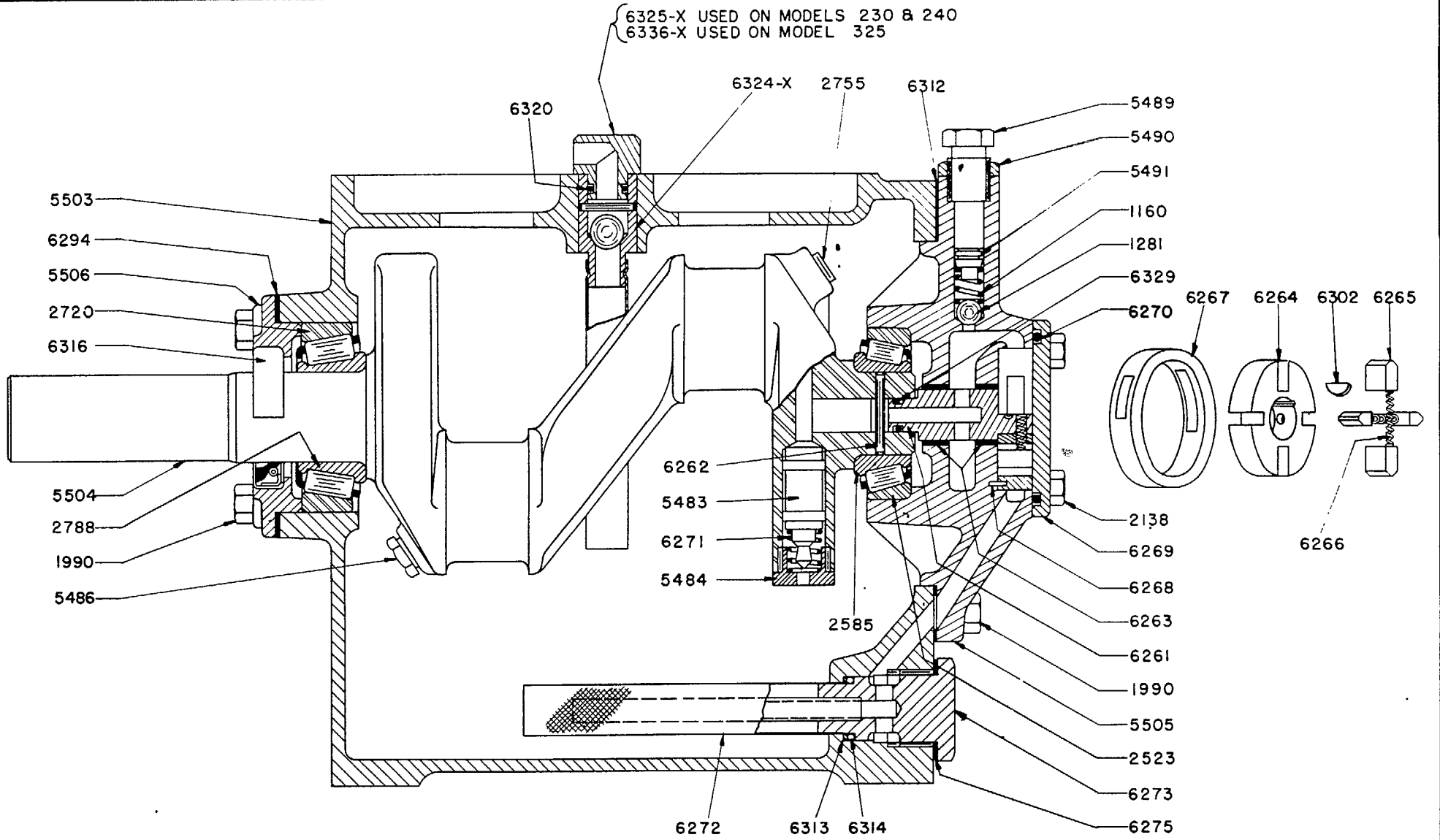






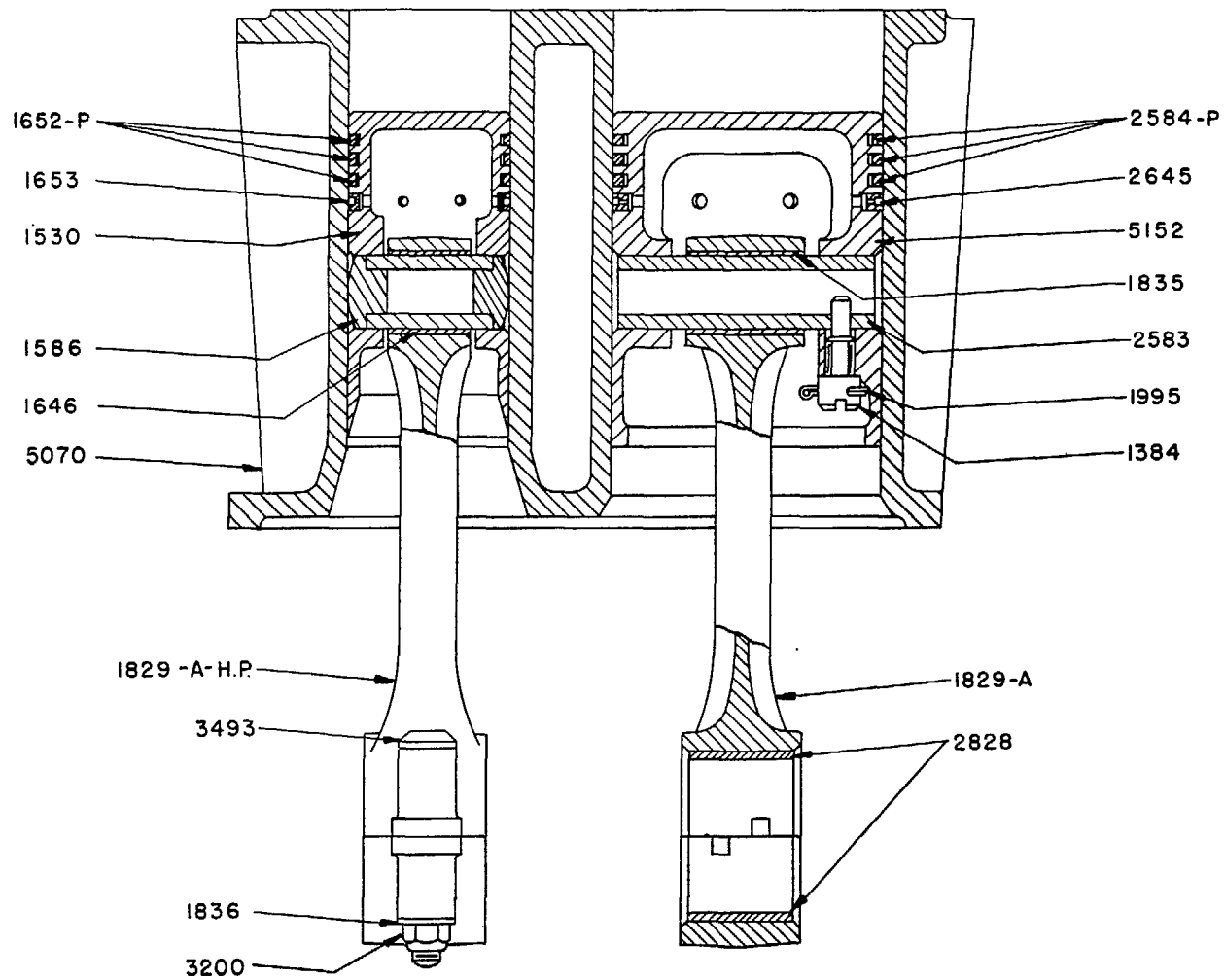






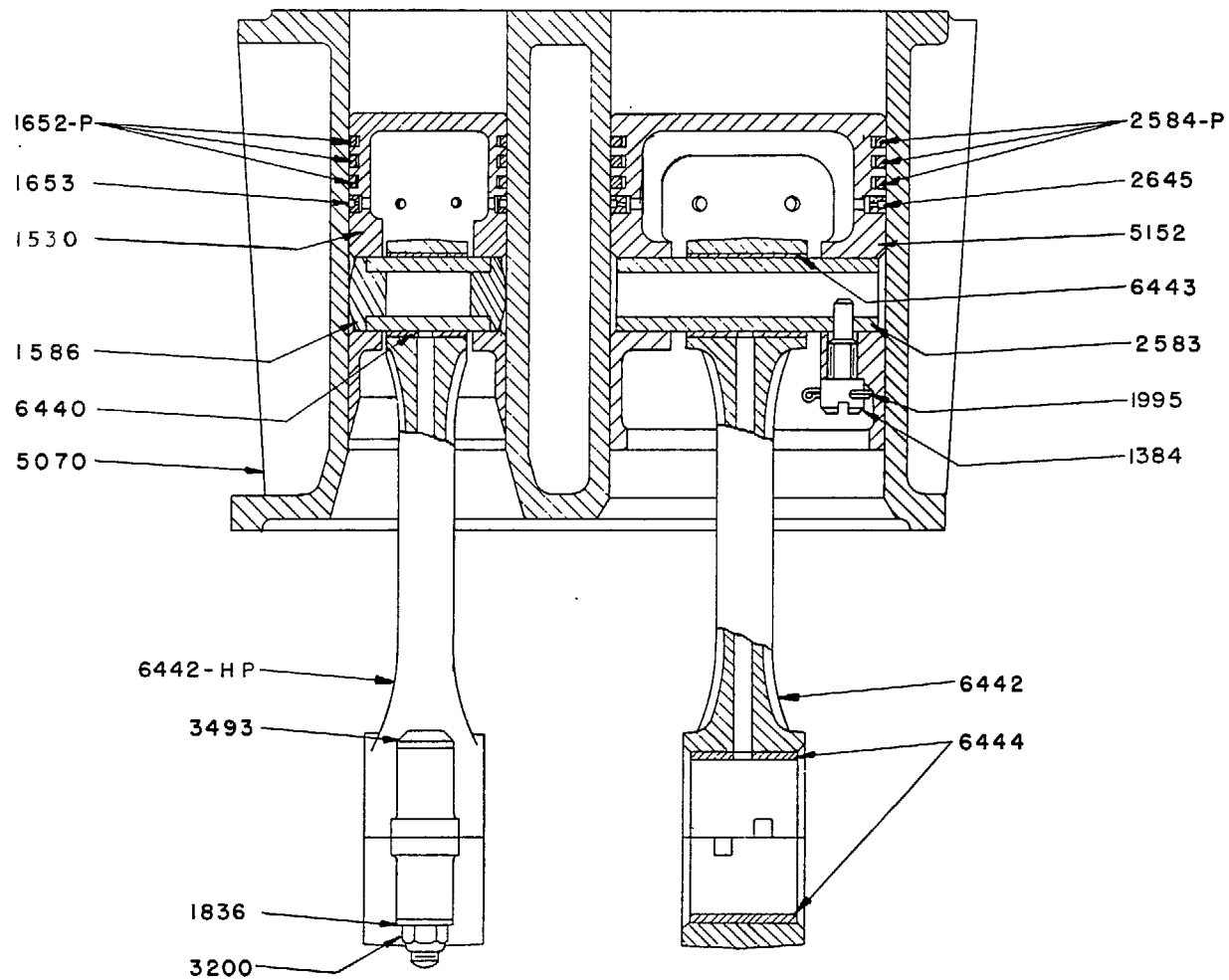
QUINCY COMPRESSOR CO.
QUINCY, ILL., U.S.A.

CRANKCASE AND RUNNING GEAR ASSEMBLY	
USED ON MODELS	DWG - 30007
230	
240	
325	



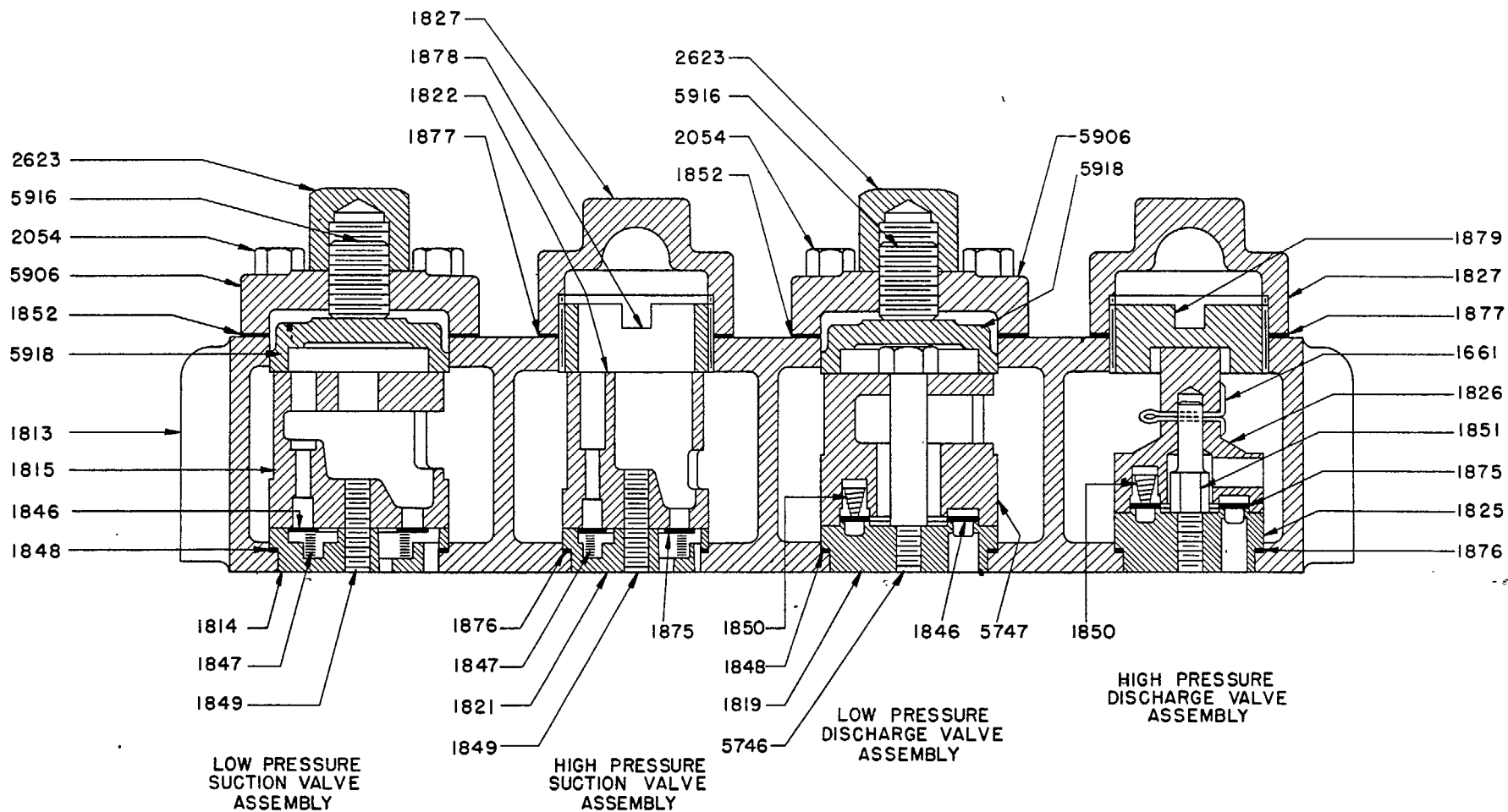
QUINCY COMPRESSOR CO.
 QUINCY, ILL., U.S.A.

CYLINDER, PISTON & ROD ASSEMBLY	
USED ON MODEL 325	DWG-30026



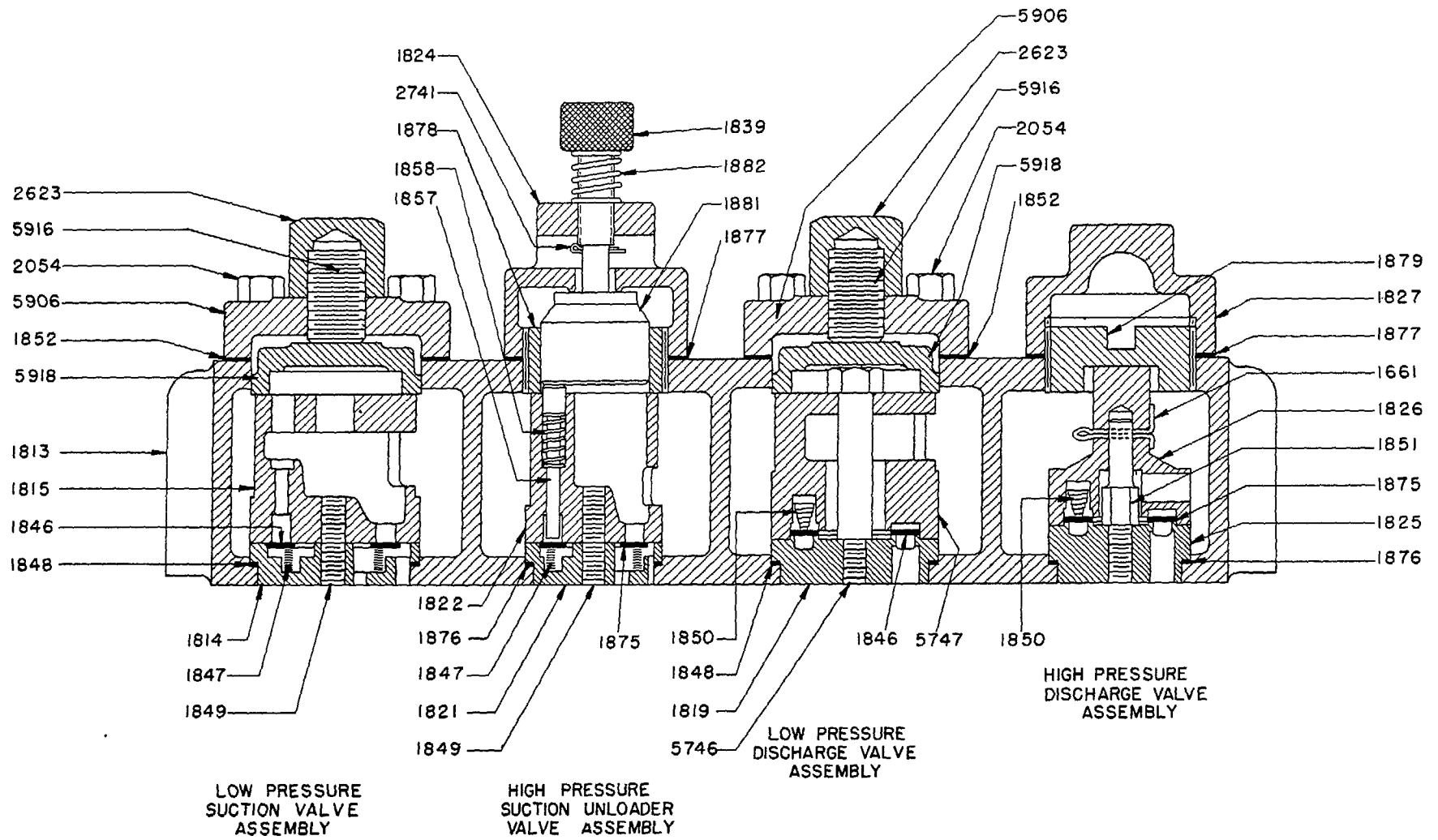
QUINCY COMPRESSOR CO.
 QUINCY, ILL., U.S.A.

CYLINDER, PISTON & ROD ASSEMBLY	
USED ON MODEL 325	DWG-30026-1



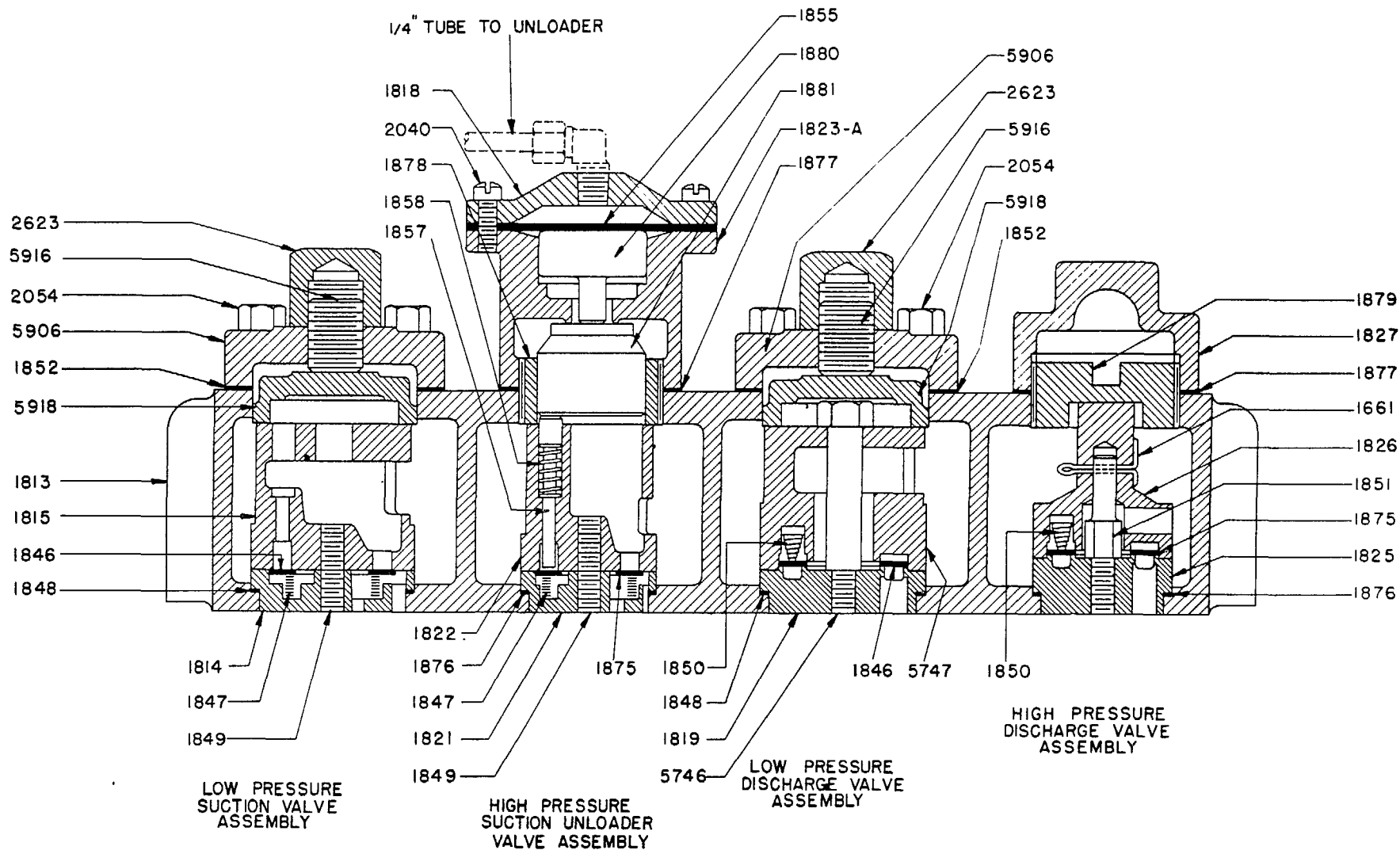
QUINCY COMPRESSOR CO.
QUINCY, ILL., U. S. A.

HEAD ASSEMBLY, PLAIN MACHINE	
USED ON MODEL 325	DWG-30027



QUINCY COMPRESSOR CO.
QUINCY, ILL., U. S. A.

HEAD ASSEMBLY, HAND UNLOADER	
USED ON MODEL	
325	DWG-30028

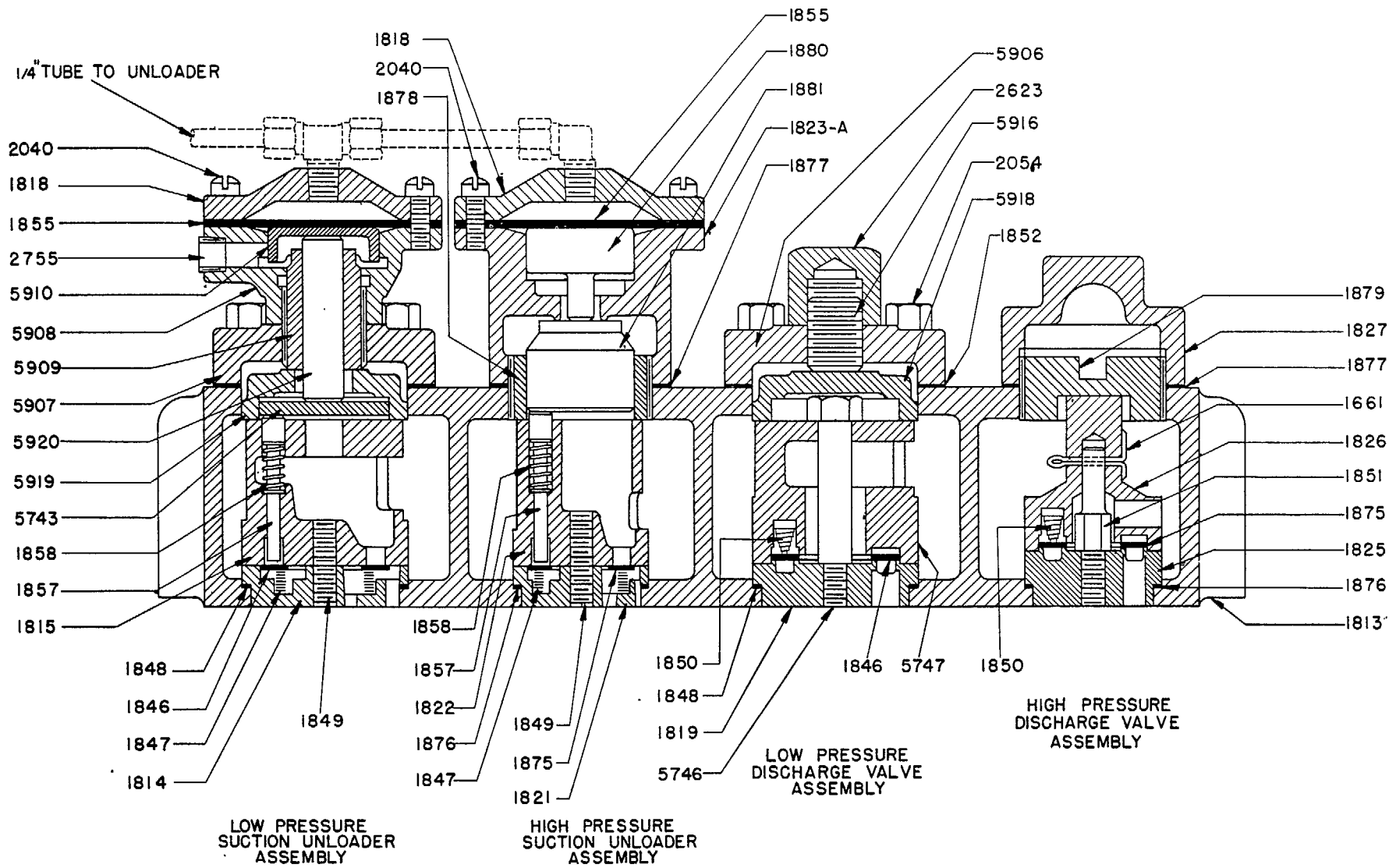


QUINCY COMPRESSOR CO.
QUINCY, ILL., U.S.A.

HEAD ASSEMBLY, LOADLESS STARTING

USED ON MODEL
325

DWG-30029



QUINCY COMPRESSOR CO.
QUINCY, ILL., U.S.A.

HEAD ASSEMBLY, PILOT & DUAL CONTROL	
USED ON MODEL 325	DWG-30030